

TRIM16 Rabbit Polyclonal Antibody

Catalog No: #54441



Package Size: #54441-1 50ul #54441-2 100ul

Orders: order@signalwayantibody.comSupport: tech@signalwayantibody.com

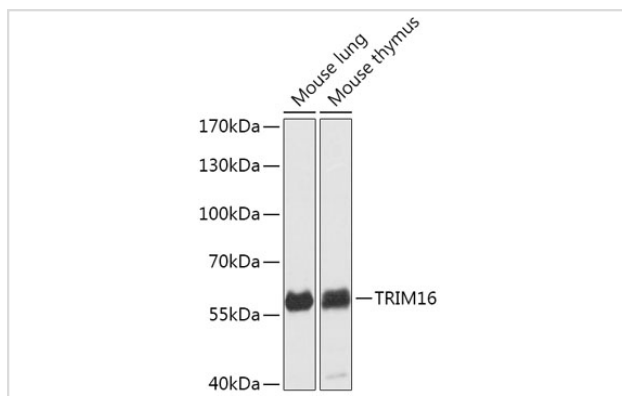
Description

Product Name	TRIM16 Rabbit Polyclonal Antibody
Host Species	Rabbit
Clonality	Polyclonal
Isotype	IgG
Purification	Affinity purification
Applications	WB,IHC,IF
Species Reactivity	Human,Mouse,Rat
Immunogen Description	Recombinant fusion protein of human TRIM16 (NP_006461.3).
Other Names	EBBP;TRIM16
Accession No.	Swiss Prot:O95361GeneID:10626
Calculated MW	—
SDS-PAGE MW	64kDa
Formulation	Buffer: PBS with 0.02% sodium azide,50% glycerol,pH7.3.
Storage	Store at -20°C. Avoid freeze / thaw cycles.

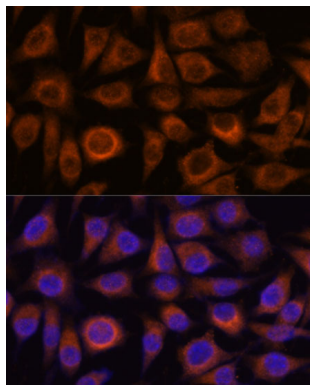
Application Details

WB □ 1:500 - 1:2000 IHC □ 1:50 - 1:200 IF □ 1:50 - 1:200

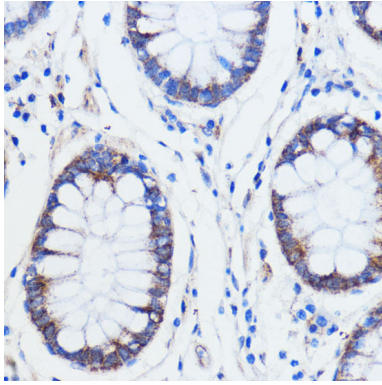
Images



Western blot analysis of extracts of various cell lines, using TRIM16 at 1:1000 dilution.



Immunofluorescence analysis of L929 cells using TRIM16 at dilution of 1:100. Blue: DAPI for nuclear staining.



Immunohistochemistry of paraffin-embedded human colon carcinoma using TRIM16 at dilution of 1:100 (40x lens).

Background

The protein encoded by this gene is a tripartite motif (TRIM) family member that contains two B box domains and a coiled-coiled region that are characteristic of the B box zinc finger protein family. While it lacks a RING domain found in other TRIM proteins, the encoded protein can homodimerize or heterodimerize with other TRIM proteins and has E3 ubiquitin ligase activity. This gene is also a tumor suppressor and is involved in secretory autophagy. [provided by RefSeq, Jan 2017]

Note: This product is for in vitro research use only and is not intended for use in humans or animals.