

TMED2 Rabbit Polyclonal Antibody

Catalog No: #54442



Package Size: #54442-1 50ul #54442-2 100ul

Orders: order@signalwayantibody.com

Support: tech@signalwayantibody.com

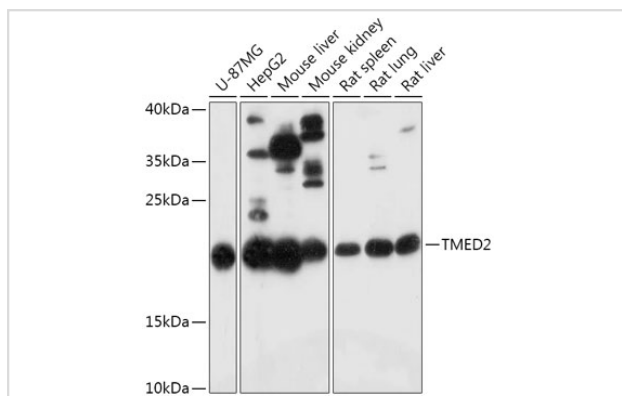
Description

Product Name	TMED2 Rabbit Polyclonal Antibody
Host Species	Rabbit
Clonality	Polyclonal
Isotype	IgG
Purification	Affinity purification
Applications	WB,IF
Species Reactivity	Human,Mouse,Rat
Immunogen Description	Recombinant fusion protein of human TMED2 (NP_006806.1).
Other Names	P24A;RNP24;p24;p24b1;p24beta1;TMED2
Accession No.	Swiss Prot:Q15363GeneID:10959
Calculated MW	22kDa
SDS-PAGE MW	23kDa
Formulation	Buffer: PBS with 0.02% sodium azide,50% glycerol,pH7.3.
Storage	Store at -20°C. Avoid freeze / thaw cycles.

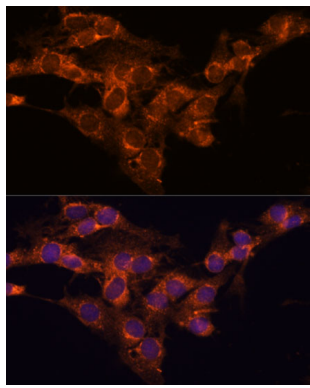
Application Details

WB □ 1:500 - 1:2000 IF □ 1:50 - 1:200

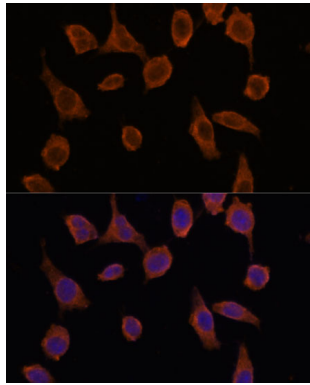
Images



Western blot analysis of extracts of various cell lines, using TMED2 at 1:1000 dilution.



Immunofluorescence analysis of C6 cells using TMED2 at dilution of 1:100. Blue: DAPI for nuclear staining.



Immunofluorescence analysis of L929 cells using TMED2 at dilution of 1:100. Blue: DAPI for nuclear staining.

Background

-

Note: This product is for in vitro research use only and is not intended for use in humans or animals.