

ZPBP Rabbit Polyclonal Antibody

Catalog No: #54443



Package Size: #54443-1 50ul #54443-2 100ul

Orders: order@signalwayantibody.comSupport: tech@signalwayantibody.com

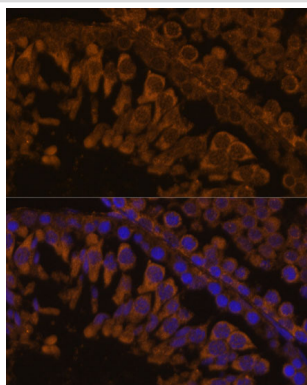
Description

Product Name	ZPBP Rabbit Polyclonal Antibody
Host Species	Rabbit
Clonality	Polyclonal
Isotype	IgG
Purification	Affinity purification
Applications	WB,IHC,IF
Species Reactivity	Human,Mouse,Rat
Immunogen Description	Recombinant fusion protein of human ZPBP (NP_008940.2).
Other Names	ZPBP1;ZPBP
Accession No.	Swiss Prot:Q9BS86GeneID:11055
Calculated MW	—
SDS-PAGE MW	34kDa
Formulation	Buffer: PBS with 0.02% sodium azide,50% glycerol,pH7.3.
Storage	Store at -20°C. Avoid freeze / thaw cycles.

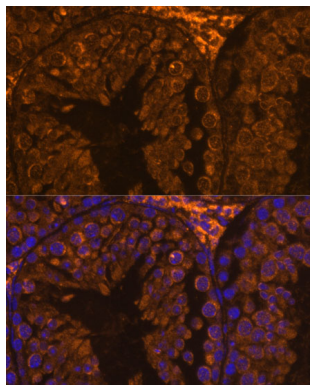
Application Details

WB □ 1:500 - 1:2000 IHC □ 1:50 - 1:200 IF □ 1:50 - 1:200

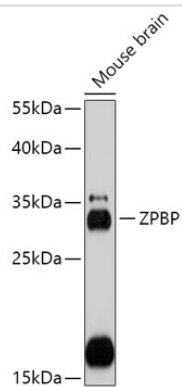
Images



Immunofluorescence analysis of rat testis using ZPBP at dilution of 1:100. Blue: DAPI for nuclear staining.



Immunofluorescence analysis of mouse testis using ZPBP at dilution of 1:100. Blue: DAPI for nuclear staining.



Western blot analysis of extracts of Mouse brain, using ZPBP at 1:1000 dilution.

Background

ZPBP is one of several proteins that are thought to participate in secondary binding between acrosome-reacted sperm and the egg-specific extracellular matrix, the zona pellucida (McLeskey et al., 1998 [PubMed 9378618]).[supplied by OMIM, Aug 2008]

Note: This product is for in vitro research use only and is not intended for use in humans or animals.