

TMED3 Rabbit Polyclonal Antibody

Catalog No: #54449

Package Size: #54449-1 50ul #54449-2 100ul

Orders: order@signalwayantibody.comSupport: tech@signalwayantibody.com

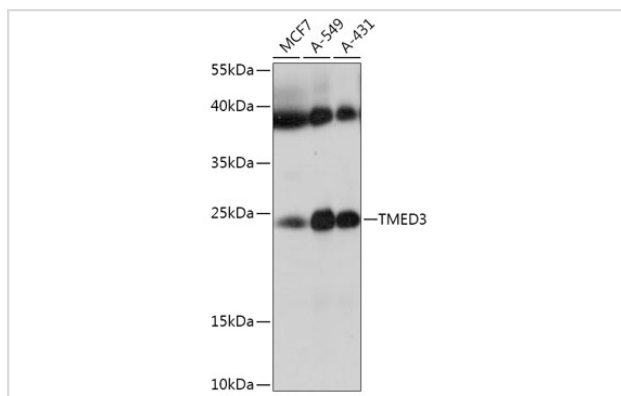
Description

Product Name	TMED3 Rabbit Polyclonal Antibody
Host Species	Rabbit
Clonality	Polyclonal
Isotype	IgG
Purification	Affinity purification
Applications	WB,IHC,IF
Species Reactivity	Human,Mouse,Rat
Immunogen Description	Recombinant fusion protein of human TMED3 (NP_031390.1).
Other Names	C15orf22;P24B;p24g4;p26;TMED3
Accession No.	Swiss Prot:Q9Y3Q3GeneID:23423
Calculated MW	19kDa/24kDa
SDS-PAGE MW	25kDa
Formulation	Buffer: PBS with 0.02% sodium azide,50% glycerol,pH7.3.
Storage	Store at -20°C. Avoid freeze / thaw cycles.

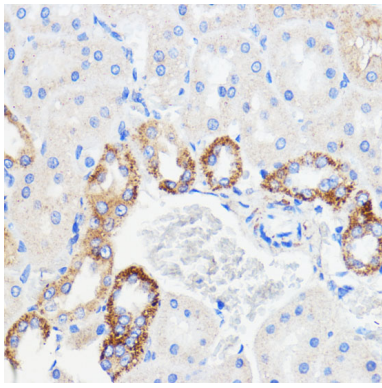
Application Details

WB □ 1:500 - 1:2000 IHC □ 1:50 - 1:200 IF □ 1:50 - 1:200

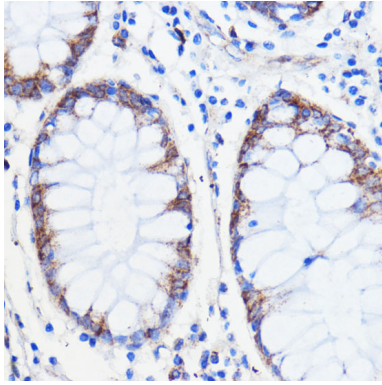
Images



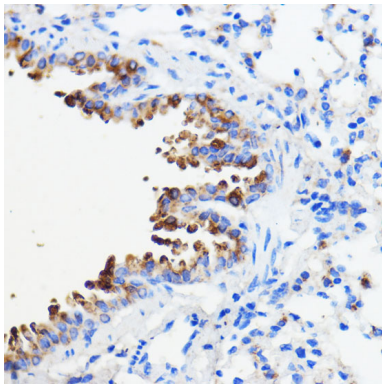
Western blot analysis of extracts of various cell lines, using TMED3 at 1:1000 dilution.



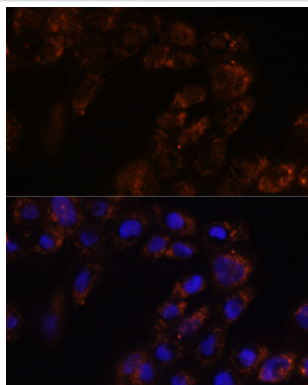
Immunohistochemistry of paraffin-embedded rat kidney using TMED3 at dilution of 1:100 (40x lens).



Immunohistochemistry of paraffin-embedded human colon carcinoma using TMED3 at dilution of 1:100 (40x lens).



Immunohistochemistry of paraffin-embedded mouse lung using TMED3 at dilution of 1:100 (40x lens).



Immunofluorescence analysis of A431 cells using TMED3 at dilution of 1:100. Blue: DAPI for nuclear staining.

Background

Note: This product is for in vitro research use only and is not intended for use in humans or animals.