

MT-ND2 Rabbit Polyclonal Antibody

Catalog No: #54486



Package Size: #54486-1 50ul #54486-2 100ul

Orders: order@signalwayantibody.comSupport: tech@signalwayantibody.com

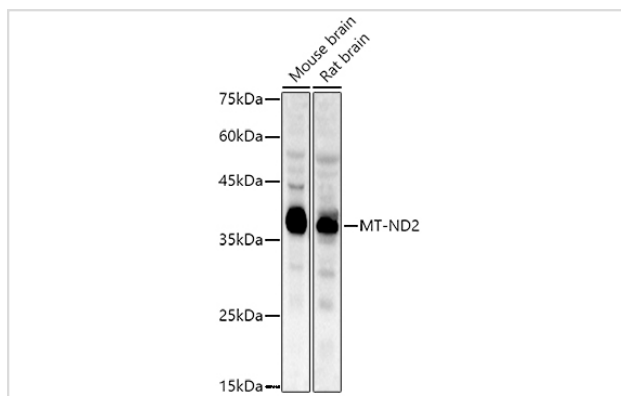
Description

Product Name	MT-ND2 Rabbit Polyclonal Antibody
Host Species	Rabbit
Clonality	Polyclonal
Isotype	IgG
Purification	Affinity purification
Applications	WB,IHC,IF
Species Reactivity	Human,Mouse,Rat
Immunogen Description	A synthetic peptide of human MT-ND2 (AXF37149.1).
Other Names	MTND2;MT-ND2
Accession No.	Uniprot:P03891GeneID:4536
Calculated MW	43kDa
SDS-PAGE MW	39KDa
Formulation	PBS with 0.02% sodium azide,50% glycerol,pH7.3.
Storage	Store at -20°C. Avoid freeze / thaw cycles.

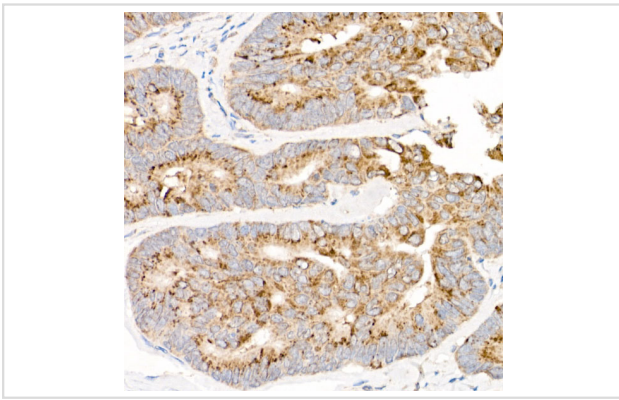
Application Details

WB □ 1:500 - 1:2000 IHC □ 1:50 - 1:200 IF □ 1:50 - 1:200

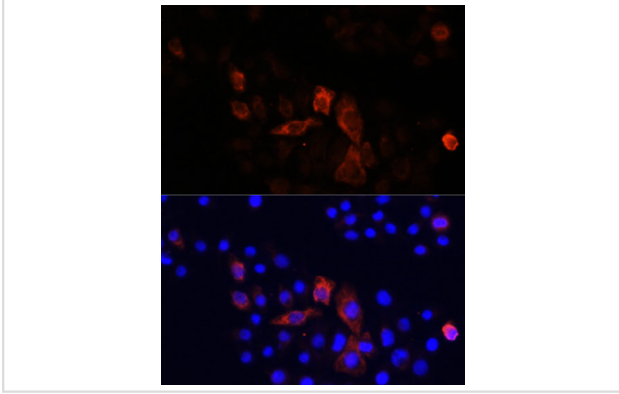
Images



Western blot analysis of extracts of various cell lines, using MT-ND2 antibody.



Immunohistochemistry of paraffin-embedded human colon carcinoma using MT-ND2 Rabbit pAb.



Immunofluorescence analysis of HeLa cells using MT-ND2 antibody.

Background

Core subunit of the mitochondrial membrane respiratory chain NADH dehydrogenase (Complex I which catalyzes electron transfer from NADH through the respiratory chain, using ubiquinone as an electron acceptor. Essential for the catalytic activity and assembly of complex I.

Note: This product is for in vitro research use only and is not intended for use in humans or animals.