

MT-ND4L Rabbit Polyclonal Antibody

Catalog No: #54487



Package Size: #54487-1 50ul #54487-2 100ul

Orders: order@signalwayantibody.comSupport: tech@signalwayantibody.com

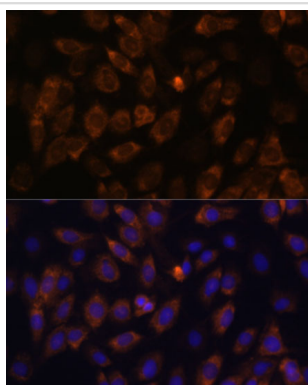
Description

Product Name	MT-ND4L Rabbit Polyclonal Antibody
Host Species	Rabbit
Clonality	Polyclonal
Isotype	IgG
Purification	Affinity purification
Applications	IF
Species Reactivity	Mouse,Rat
Immunogen Description	Recombinant protein of human MT-ND4L.
Other Names	MTND4L;MT-ND4L
Accession No.	Uniprot:P03901GeneID:4539
Calculated MW	—
SDS-PAGE MW	Refer to figures
Formulation	PBS with 0.02% sodium azide,50% glycerol,pH7.3.
Storage	Store at -20°C. Avoid freeze / thaw cycles.

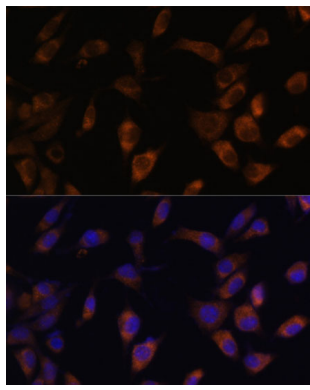
Application Details

IF □ 1:50 - 1:200

Images



Immunofluorescence analysis of C6 cells using MT-ND4L antibody.



Immunofluorescence analysis of L929 cells using MT-ND4L antibody.

Background

Core subunit of the mitochondrial membrane respiratory chain NADH dehydrogenase (Complex I which catalyzes electron transfer from NADH through the respiratory chain, using ubiquinone as an electron acceptor).

Note: This product is for in vitro research use only and is not intended for use in humans or animals.