

S1PR2 Rabbit Polyclonal Antibody

Catalog No: #29563

Package Size: #29563-1 50ul #29563-2 100ul

Orders: order@signalwayantibody.com

Support: tech@signalwayantibody.com

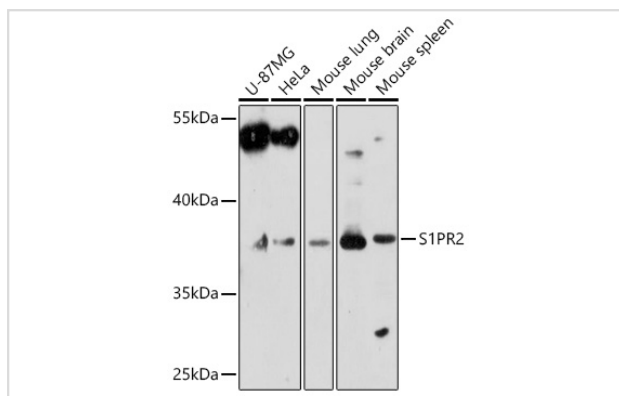
Description

Product Name	S1PR2 Rabbit Polyclonal Antibody
Host Species	Rabbit
Clonality	Polyclonal
Isotype	IgG
Purification	Affinity purification
Applications	WB;IHC;IF;ELISA
Species Reactivity	Human;Mouse;Rat
Immunogen Description	Recombinant protein of human S1PR2 .
Other Names	EDG5;H218;LPB2;S1P2;AGR16;EDG-5;DFNB68;Gpcr13;S1PR2
Accession No.	Swiss Prot:O95136GeneID:9294
Calculated MW	39kDa
SDS-PAGE MW	38kDa
Formulation	Buffer: PBS with 0.02% sodium azide,50% glycerol,pH7.3.
Storage	Store at -20°C. Avoid freeze / thaw cycles.

Application Details

WB □ 1:500 - 1:2000

Images



Western blot analysis of extracts of various cell lines, using S1PR2 at 1:1000 dilution.

Background

This gene encodes a member of the G protein-coupled receptors, as well as the EDG family of proteins. The encoded protein is a receptor for sphingosine 1-phosphate, which participates in cell proliferation, survival, and transcriptional activation. Defects in this gene have been associated with congenital profound deafness.

Note: This product is for in vitro research use only and is not intended for use in humans or animals.