

## DIP2C Rabbit Polyclonal Antibody

Catalog No: #54528

Package Size: #54528-1 50ul #54528-2 100ul

Orders: [order@signalwayantibody.com](mailto:order@signalwayantibody.com)Support: [tech@signalwayantibody.com](mailto:tech@signalwayantibody.com)

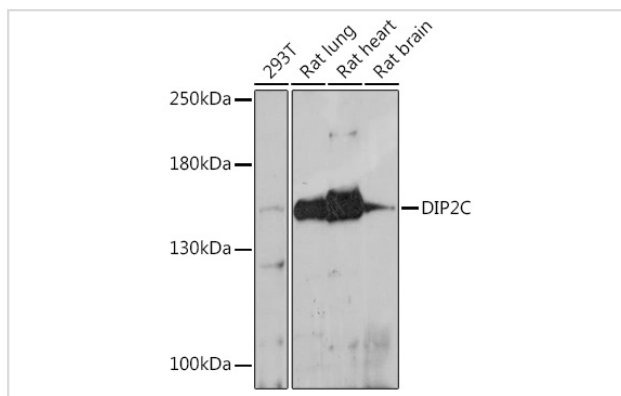
## Description

Product Name	DIP2C Rabbit Polyclonal Antibody
Host Species	Rabbit
Clonality	Polyclonal
Isotype	IgG
Purification	Affinity purification
Applications	WB,IF
Species Reactivity	Human,Mouse,Rat
Immunogen Description	Recombinant protein of human DIP2C.
Other Names	KIAA0934;DIP2C
Accession No.	Swiss Prot:Q9Y2E4GeneID:22982
Calculated MW	170kDa
SDS-PAGE MW	155kDa
Formulation	Buffer: PBS with 0.02% sodium azide,50% glycerol,pH7.3.
Storage	Store at -20°C. Avoid freeze / thaw cycles.

## Application Details

WB □ 1:500 - 1:2000 IF □ 1:50 - 1:200

## Images



Western blot analysis of extracts of various cell lines, using DIP2C at 1:1000 dilution.

## Background

This gene encodes a member of the disco-interacting protein homolog 2 family. The protein shares strong similarity with a Drosophila protein which interacts with the transcription factor disco and is expressed in the nervous system.

---

Note: This product is for in vitro research use only and is not intended for use in humans or animals.