

NCAPD2 Rabbit Polyclonal Antibody

Catalog No: #54535



Package Size: #54535-1 50ul #54535-2 100ul

Orders: order@signalwayantibody.comSupport: tech@signalwayantibody.com

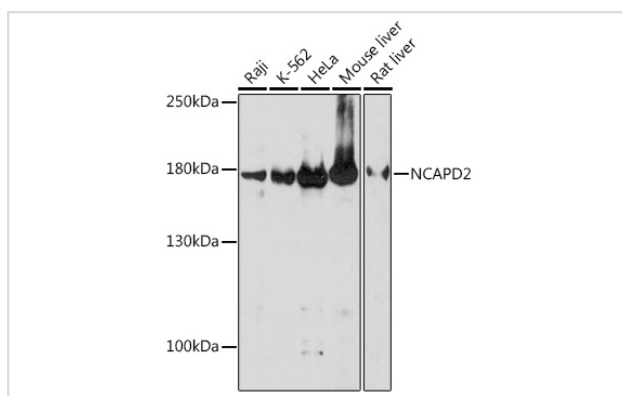
Description

Product Name	NCAPD2 Rabbit Polyclonal Antibody
Host Species	Rabbit
Clonality	Polyclonal
Isotype	IgG
Purification	Affinity purification
Applications	WB,IF
Species Reactivity	Human,Mouse,Rat
Immunogen Description	Recombinant protein of human NCAPD2.
Other Names	CAP-D2;CNAP1;hCAP-D2;NCAPD2
Accession No.	Swiss Prot:Q15021GeneID:9918
Calculated MW	—
SDS-PAGE MW	175kDa
Formulation	Buffer: PBS with 0.02% sodium azide,50% glycerol,pH7.3.
Storage	Store at -20°C. Avoid freeze / thaw cycles.

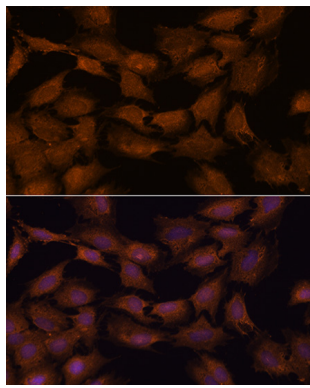
Application Details

WB □ 1:500 - 1:2000 IF □ 1:50 - 1:200

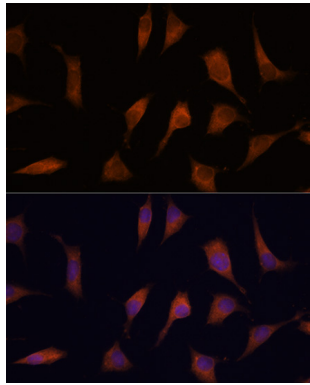
Images



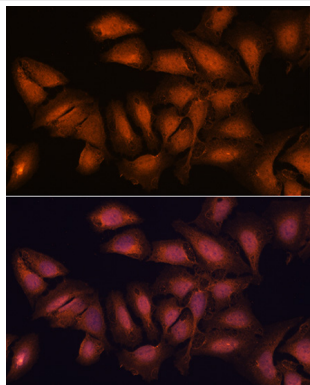
Western blot analysis of extracts of various cell lines, using NCAPD2 at 1:1000 dilution.



Immunofluorescence analysis of C6 cells using NCAPD2 at dilution of 1:100. Blue: DAPI for nuclear staining.



Immunofluorescence analysis of L929 cells using NCAPD2 at dilution of 1:100. Blue: DAPI for nuclear staining.



Immunofluorescence analysis of U2OS cells using NCAPD2 at dilution of 1:100. Blue: DAPI for nuclear staining.

Background

-

Note: This product is for in vitro research use only and is not intended for use in humans or animals.