

ZMPSTE24 Rabbit Polyclonal Antibody

Catalog No: #54572



Package Size: #54572-1 50ul #54572-2 100ul

Orders: order@signalwayantibody.comSupport: tech@signalwayantibody.com

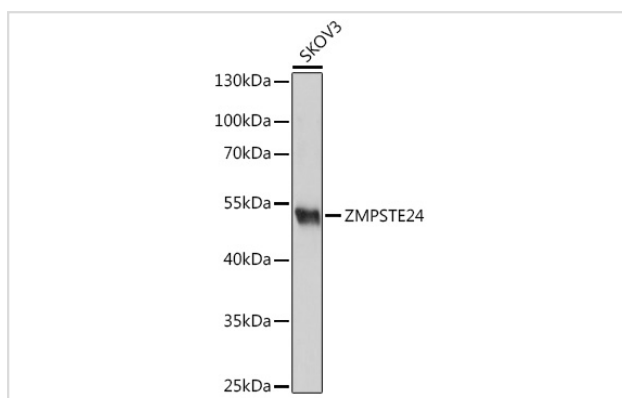
Description

Product Name	ZMPSTE24 Rabbit Polyclonal Antibody
Host Species	Rabbit
Clonality	Polyclonal
Isotype	IgG
Purification	Affinity purification
Applications	WB,IHC
Species Reactivity	Human,Mouse,Rat
Immunogen Description	A synthetic peptide of human ZMPSTE24 (NP_005848.2).
Other Names	ZMPSTE24;FACE-1;FACE1;HGPS;PRO1;STE24;Ste24p
Accession No.	Swiss Prot:O75844GeneID:10269
Calculated MW	—
SDS-PAGE MW	54kDa
Formulation	Buffer: PBS with 0.02% sodium azide,50% glycerol,pH7.3.
Storage	Store at -20°C. Avoid freeze / thaw cycles.

Application Details

WB □ 1:500 - 1:2000 IHC □ 1:50 - 1:200

Images



Western blot analysis of extracts of SKOV3 cells, using ZMPSTE24 at 1:1000 dilution.

Background

—

Note: This product is for in vitro research use only and is not intended for use in humans or animals.