

MSI1 Rabbit Polyclonal Antibody

Catalog No: #54695



Package Size: #54695-1 50ul #54695-2 100ul

Orders: order@signalwayantibody.comSupport: tech@signalwayantibody.com

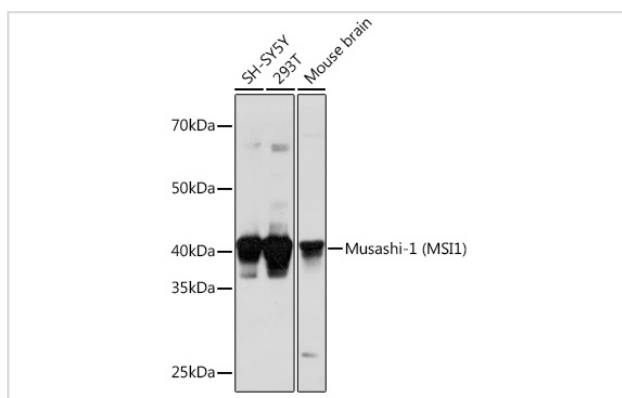
Description

Product Name	MSI1 Rabbit Polyclonal Antibody
Host Species	Rabbit
Clonality	Polyclonal
Isotype	IgG
Purification	Affinity purification
Applications	WB,IHC
Species Reactivity	Human,Mouse,Rat
Immunogen Description	A synthetic peptide of human Musashi-1 (Musashi-1 (MSI1)) (NP_002433.1).
Other Names	MSI1
Accession No.	Uniprot:O43347GeneID:4440
Calculated MW	39kDa
SDS-PAGE MW	42KDa
Formulation	PBS with 0.02% sodium azide,50% glycerol,pH7.3.
Storage	Store at -20°C. Avoid freeze / thaw cycles.

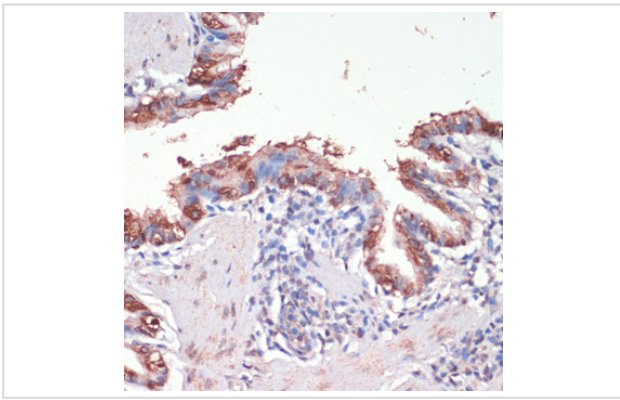
Application Details

WB 1:500 - 1:1000 IHC 1:50 - 1:100

Images



Western blot analysis of extracts of various cell lines, using Musashi-1 (Musashi-1 (MSI1)) Polyclonal Antibody.



Immunohistochemistry of paraffin-embedded rat lung using Musashi-1 (Musashi-1 (MSI1)) antibody.

Background

This gene encodes a protein containing two conserved tandem RNA recognition motifs. Similar proteins in other species function as RNA-binding proteins and play central roles in posttranscriptional gene regulation. Expression of this gene has been correlated with the grade of the malignancy and proliferative activity in gliomas and melanomas. A pseudogene for this gene is located on chromosome 11q13.

Note: This product is for in vitro research use only and is not intended for use in humans or animals.