

Twist Rabbit Polyclonal Antibody

Catalog No: #54749



Package Size: #54749-1 50ul #54749-2 100ul

Orders: order@signalwayantibody.comSupport: tech@signalwayantibody.com

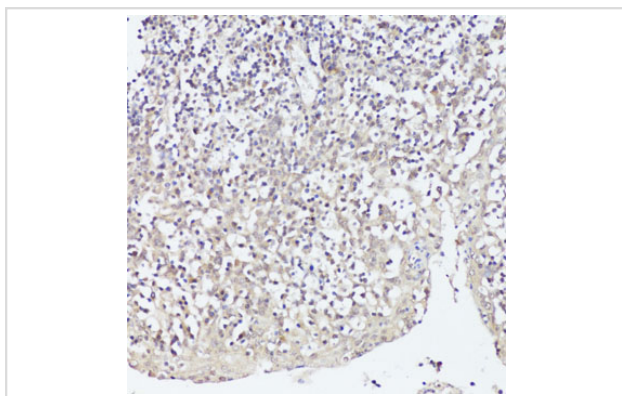
Description

Product Name	Twist Rabbit Polyclonal Antibody
Host Species	Rabbit
Clonality	Polyclonal
Isotype	IgG
Purification	Affinity purification
Applications	WB,IHC
Species Reactivity	Human,Mouse,Rat
Immunogen Description	A synthetic peptide of human Twist (NP_000465.1).
Other Names	TWIST1;ACS3;BPES2;BPES3;CRS;CRS1;CSO;SCS;TWIST;bHLHa38
Accession No.	Swiss Prot:Q15672GeneID:7291
Calculated MW	21kDa
SDS-PAGE MW	21kDa
Formulation	Buffer: PBS with 0.02% sodium azide,50% glycerol,pH7.3.
Storage	Store at -20°C. Avoid freeze / thaw cycles.

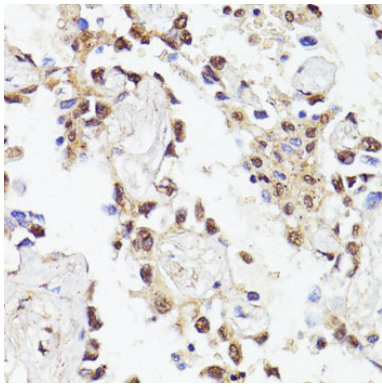
Application Details

WB □ 1:500 - 1:2000 IHC □ 1:50 - 1:200

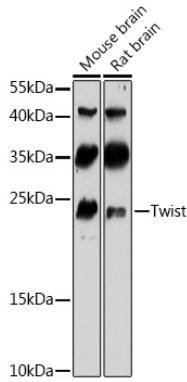
Images



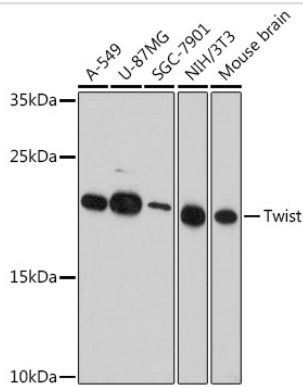
Immunohistochemistry of paraffin-embedded human tonsil using Twist at dilution of 1:100 (40x lens).



Immunohistochemistry of paraffin-embedded human lung cancer using Twist at dilution of 1:100 (40x lens).



Western blot analysis of extracts of various cell lines, using Twist at 1:1000 dilution.



Western blot analysis of extracts of various cell lines, using Twist at 1:1000 dilution.

Background

Basic helix-loop-helix (bHLH) transcription factors have been implicated in cell lineage determination and differentiation. The protein encoded by this gene is a bHLH transcription factor and shares similarity with another bHLH transcription factor, Dermo1. The strongest expression of this mRNA is in placental tissue; in adults, mesodermally derived tissues express this mRNA preferentially. Mutations in this gene have been found in patients with Saethre-Chotzen syndrome.

Note: This product is for in vitro research use only and is not intended for use in humans or animals.