

ENTPD1/CD39 Rabbit Polyclonal Antibody

Catalog No: #54789

Package Size: #54789-1 50ul #54789-2 100ul

Orders: order@signalwayantibody.comSupport: tech@signalwayantibody.com

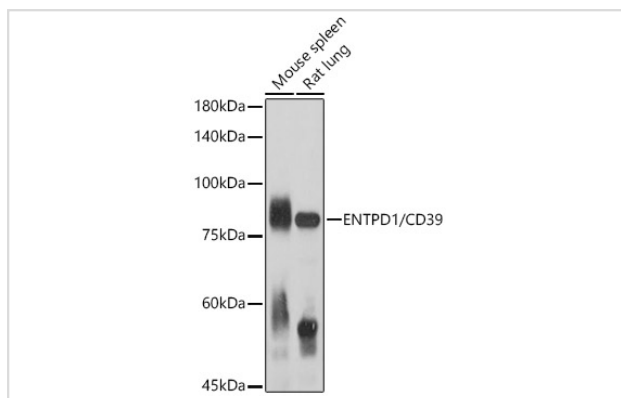
Description

Product Name	ENTPD1/CD39 Rabbit Polyclonal Antibody
Host Species	Rabbit
Clonality	Polyclonal
Isotype	IgG
Purification	Affinity purification
Applications	WB,IHC,IF
Species Reactivity	Human,Mouse,Rat
Immunogen Description	Recombinant fusion protein of human ENTDP1/CD39 (NP_001157655.1).
Other Names	ENTPD1;ATPDase;CD39;NTPDase-1;SPG64
Accession No.	Uniprot:P49961 GeneID:953
Calculated MW	34kDa/42kDa/46kDa/57kDa/58kDa/59kDa
SDS-PAGE MW	80KDa
Formulation	PBS with 0.02% sodium azide,50% glycerol,pH7.3.
Storage	Store at -20°C. Avoid freeze / thaw cycles.

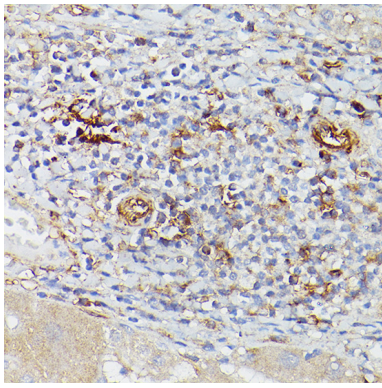
Application Details

WB □ 1:200 - 1:1000 IHC □ 1:50 - 1:200 IF □ 1:50 - 1:200

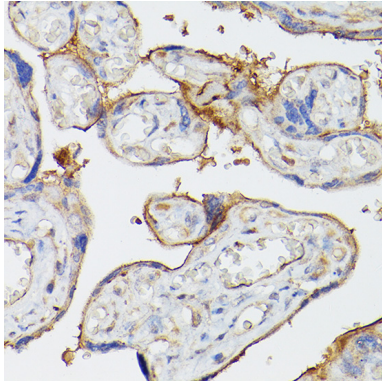
Images



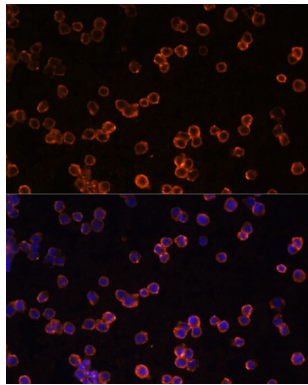
Western blot analysis of extracts of various cell lines, using ENTDP1/CD39 antibody.



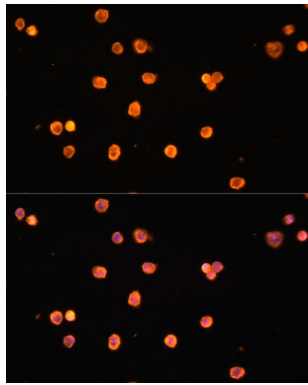
Immunohistochemistry of paraffin-embedded human liver using ENTPD1/CD39 Rabbit pAb.



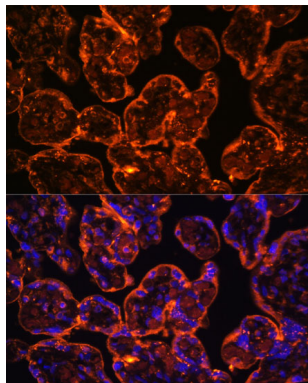
Immunohistochemistry of paraffin-embedded human placenta using ENTPD1/CD39 Rabbit pAb.



Immunofluorescence analysis of Raw264.7 cells using ENTPD1/CD39 Polyclonal Antibody.



Immunofluorescence analysis of THP-1 cells using ENTPD1/CD39 Polyclonal Antibody.



Immunofluorescence analysis of human placenta using ENTPD1/CD39 Polyclonal Antibody.

Background

The protein encoded by this gene is a plasma membrane protein that hydrolyzes extracellular ATP and ADP to AMP. Inhibition of this protein's activity may confer anticancer benefits. Several transcript variants encoding different isoforms have been found for this gene.

Note: This product is for in vitro research use only and is not intended for use in humans or animals.