

DACH1 Rabbit Polyclonal Antibody

Catalog No: #54796

Package Size: #54796-1 50ul #54796-2 100ul

Orders: order@signalwayantibody.comSupport: tech@signalwayantibody.com

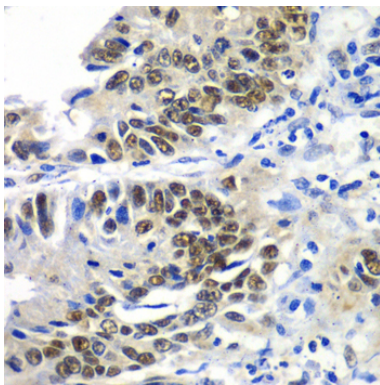
Description

Product Name	DACH1 Rabbit Polyclonal Antibody
Host Species	Rabbit
Clonality	Polyclonal
Isotype	IgG
Purification	Affinity purification
Applications	WB,IHC
Species Reactivity	Human,Mouse,Rat
Immunogen Description	Recombinant fusion protein of human DACH1 (NP_542937.2).
Other Names	DACH1;DACH
Accession No.	Swiss Prot:Q9UI36GeneID:1602
Calculated MW	52kDa/57kDa/73kDa/78kDa
Formulation	Buffer: PBS with 0.02% sodium azide,50% glycerol,pH7.3.
Storage	Store at -20°C. Avoid freeze / thaw cycles.

Application Details

WB □ 1:200 - 1:2000 IHC □ 1:20 - 1:200

Images



Immunohistochemistry of paraffin-embedded human colon carcinoma using DACH1 at dilution of 1:100 (40x lens).

Background

This gene encodes a chromatin-associated protein that associates with other DNA-binding transcription factors to regulate gene expression and cell fate determination during development. The protein contains a Ski domain that is highly conserved from Drosophila to human. Expression of this gene is lost in some forms of metastatic cancer, and is correlated with poor prognosis. Multiple transcript variants encoding different isoforms have been found for this gene.

Note: This product is for in vitro research use only and is not intended for use in humans or animals.