

DNASE1L1 Rabbit Polyclonal Antibody

Catalog No: #54798

Package Size: #54798-1 50ul #54798-2 100ul

Orders: order@signalwayantibody.comSupport: tech@signalwayantibody.com

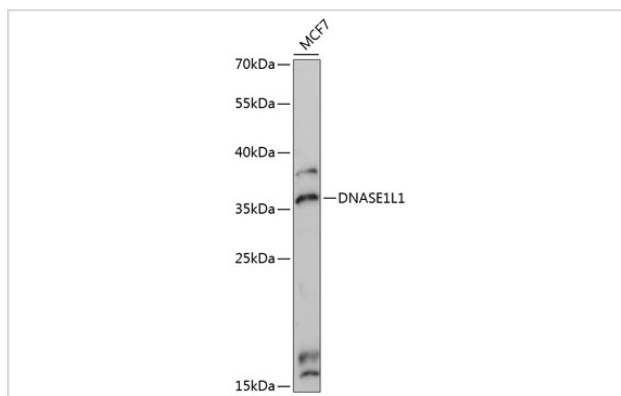
Description

Product Name	DNASE1L1 Rabbit Polyclonal Antibody
Host Species	Rabbit
Clonality	Polyclonal
Isotype	IgG
Purification	Affinity purification
Applications	WB,IF
Species Reactivity	Human,Mouse,Rat
Immunogen Description	Recombinant fusion protein of human DNASE1L1 (NP_006721.1).
Other Names	DNASE1L1;DNAS1L1;DNASEX;DNL1L;G4.8;XIB
Accession No.	Swiss Prot:P49184GeneID:1774
Calculated MW	33kDa
SDS-PAGE MW	36kDa
Formulation	Buffer: PBS with 0.02% sodium azide,50% glycerol,pH7.3.
Storage	Store at -20°C. Avoid freeze / thaw cycles.

Application Details

WB □ 1:200 - 1:2000 IF □ 1:50 - 1:200

Images



Western blot analysis of extracts of MCF7 cells, using DNASE1L1 at 1:3000 dilution.

Background

This gene encodes a deoxyribonuclease protein that shows high sequence similarity to DNase I. The encoded protein is localized to the endoplasmic reticulum and modified by N-linked glycosylation. Alternate transcriptional splice variants encoding the same protein have been observed.

Note: This product is for in vitro research use only and is not intended for use in humans or animals.