

EXTL3 Rabbit Polyclonal Antibody

Catalog No: #54801

Package Size: #54801-1 50ul #54801-2 100ul

Orders: order@signalwayantibody.com

Support: tech@signalwayantibody.com

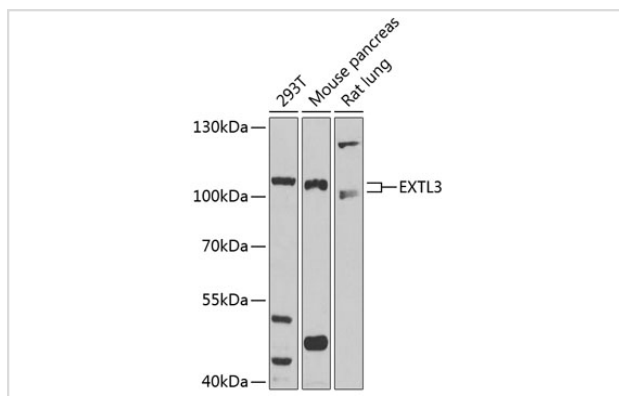
Description

| | |
|-----------------------|--|
| Product Name | EXTL3 Rabbit Polyclonal Antibody |
| Host Species | Rabbit |
| Clonality | Polyclonal |
| Isotype | IgG |
| Purification | Affinity purification |
| Applications | WB,IHC |
| Species Reactivity | Human,Mouse,Rat |
| Immunogen Description | Recombinant fusion protein of human EXTL3 (NP_001431.1). |
| Other Names | EXTL3;BOTV;EXTL1L;EXTR1;REGR;RPR;ISDNA |
| Accession No. | Swiss Prot:O43909GeneID:2137 |
| Calculated MW | 104kDa |
| SDS-PAGE MW | 105kDa |
| Formulation | Buffer: PBS with 0.02% sodium azide,50% glycerol,pH7.3. |
| Storage | Store at -20°C. Avoid freeze / thaw cycles. |

Application Details

WB □ 1:2000 - 1:5000 IHC □ 1:50 - 1:200

Images



Western blot analysis of extracts of various cell lines, using EXTL3 at 1:1000 dilution.

Background

This gene encodes a single-pass membrane protein which functions as a glycosyltransferase. The encoded protein catalyzes the transfer of N-acetylglucosamine to glycosaminoglycan chains. This reaction is important in heparin and heparan sulfate synthesis. Alternative splicing results in the multiple transcript variants.

Note: This product is for in vitro research use only and is not intended for use in humans or animals.