

TLN1 Rabbit Polyclonal Antibody

Catalog No: #54834



Package Size: #54834-1 50ul #54834-2 100ul

Orders: order@signalwayantibody.com

Support: tech@signalwayantibody.com

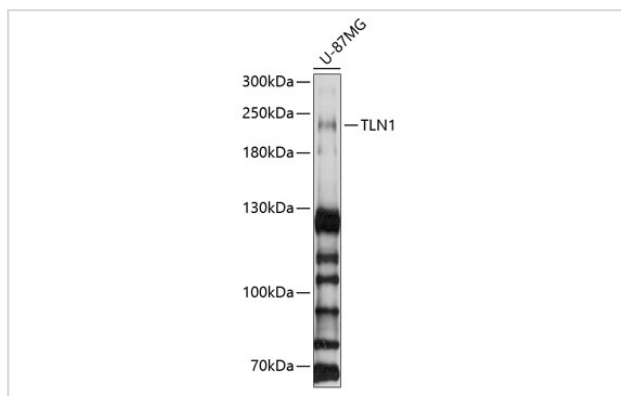
Description

Product Name	TLN1 Rabbit Polyclonal Antibody
Host Species	Rabbit
Clonality	Polyclonal
Isotype	IgG
Purification	Affinity purification
Applications	WB,IF
Species Reactivity	Human,Mouse,Rat
Immunogen Description	Recombinant fusion protein of human TLN1 (NP_006280.3).
Other Names	TLN1;ILWEQ;TLN;talin-1
Accession No.	Swiss Prot:Q9Y490GeneID:7094
Calculated MW	269kDa
SDS-PAGE MW	240kDa
Formulation	Buffer: PBS with 0.02% sodium azide,50% glycerol,pH7.3.
Storage	Store at -20°C. Avoid freeze / thaw cycles.

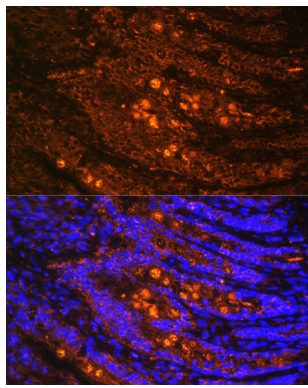
Application Details

WB □ 1:500 - 1:2000 IF □ 1:50 - 1:200

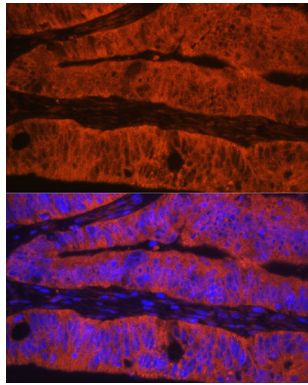
Images



Western blot analysis of extracts of U-87MG cells, using TLN1 at 1:1000 dilution.



Immunofluorescence analysis of rat Intestine using TLN1 at dilution of 1:100. Blue: DAPI for nuclear staining.



Immunofluorescence analysis of human colon carcinoma using TLN1 at dilution of 1:100. Blue: DAPI for nuclear staining.

Background

This gene encodes a cytoskeletal protein that is concentrated in areas of cell-substratum and cell-cell contacts. The encoded protein plays a significant role in the assembly of actin filaments and in spreading and migration of various cell types, including fibroblasts and osteoclasts. It codistributes with integrins in the cell surface membrane in order to assist in the attachment of adherent cells to extracellular matrices and of lymphocytes to other cells. The N-terminus of this protein contains elements for localization to cell-extracellular matrix junctions. The C-terminus contains binding sites for proteins such as beta-1-integrin, actin, and vinculin.

Note: This product is for in vitro research use only and is not intended for use in humans or animals.