

## EIF1AY Rabbit Polyclonal Antibody

Catalog No: #54842

Package Size: #54842-1 50ul #54842-2 100ul

Orders: order@signalwayantibody.com

Support: tech@signalwayantibody.com

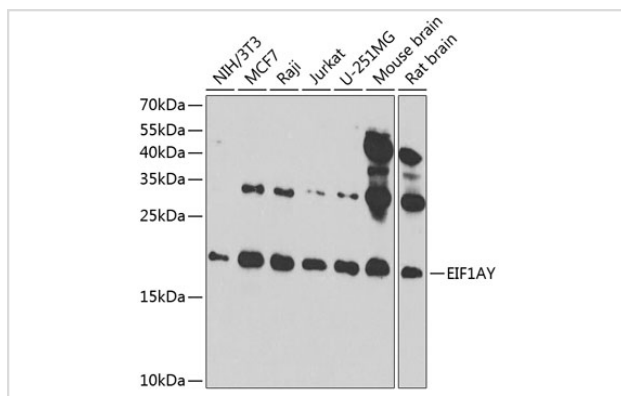
## Description

Product Name	EIF1AY Rabbit Polyclonal Antibody
Host Species	Rabbit
Clonality	Polyclonal
Isotype	IgG
Purification	Affinity purification
Applications	WB,IHC
Species Reactivity	Human,Mouse,Rat
Immunogen Description	Recombinant fusion protein of human EIF1AY (NP_004672.2).
Other Names	EIF1AY;eIF-4C;Y-linked
Accession No.	Swiss Prot:O14602GeneID:9086
Calculated MW	16kDa
SDS-PAGE MW	18kDa
Formulation	Buffer: PBS with 0.02% sodium azide,50% glycerol,pH7.3.
Storage	Store at -20°C. Avoid freeze / thaw cycles.

## Application Details

WB □ 1:200 - 1:2000 IHC □ 1:50 - 1:200

## Images



Western blot analysis of extracts of various cell lines, using EIF1AY at 1:1000 dilution.

## Background

This gene is located on the non-recombining region of the Y chromosome. It encodes a protein related to eukaryotic translation initiation factor 1A (EIF1A), which may function in stabilizing the binding of the initiator Met-tRNA to 40S ribosomal subunits. Alternative splicing results in multiple transcript variants.

---

Note: This product is for in vitro research use only and is not intended for use in humans or animals.