

NUDT21 Rabbit Polyclonal Antibody

Catalog No: #54865



Package Size: #54865-1 50ul #54865-2 100ul

Orders: order@signalwayantibody.com

Support: tech@signalwayantibody.com

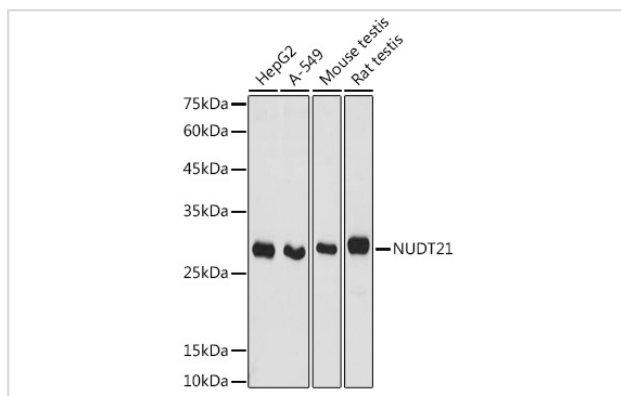
Description

Product Name	NUDT21 Rabbit Polyclonal Antibody
Host Species	Rabbit
Clonality	Polyclonal
Isotype	IgG
Purification	Affinity purification
Applications	WB,IHC
Species Reactivity	Human,Mouse,Rat
Immunogen Description	Recombinant fusion protein of human NUDT21 (NP_008937.1).
Other Names	NUDT21;CFIM25;CPSF5
Accession No.	Uniprot:O43809GeneID:11051
Calculated MW	26kDa
SDS-PAGE MW	26KDa
Formulation	PBS with 0.02% sodium azide,50% glycerol,pH7.3.
Storage	Store at -20°C. Avoid freeze / thaw cycles.

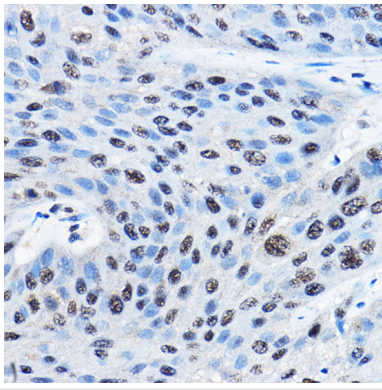
Application Details

WB □ 1:200 - 1:2000 IHC □ 1:50 - 1:200

Images



Western blot analysis of extracts of various cell lines, using NUDT21 antibody.



Immunohistochemistry of paraffin-embedded human esophageal cancer using NUDT21 Rabbit pAb.

Background

The protein encoded by this gene is one subunit of a cleavage factor required for 3' RNA cleavage and polyadenylation processing. The interaction of the protein with the RNA is one of the earliest steps in the assembly of the 3' end processing complex and facilitates the recruitment of other processing factors. This gene encodes the 25kD subunit of the protein complex, which is composed of four polypeptides.

Note: This product is for in vitro research use only and is not intended for use in humans or animals.