

## UBE2S Rabbit Polyclonal Antibody

Catalog No: #54875



Package Size: #54875-1 50ul #54875-2 100ul

Orders: order@signalwayantibody.com

Support: tech@signalwayantibody.com

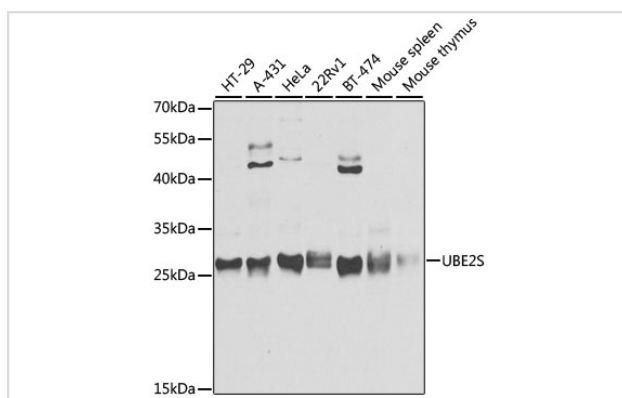
## Description

Product Name	UBE2S Rabbit Polyclonal Antibody
Host Species	Rabbit
Clonality	Polyclonal
Isotype	IgG
Purification	Affinity purification
Applications	WB,IF
Species Reactivity	Human,Mouse,Rat
Immunogen Description	Recombinant fusion protein of human UBE2S (NP_055316.2).
Other Names	UBE2S;E2-EPF;E2EPF;EPF5
Accession No.	Uniprot:Q16763GeneID:27338
Calculated MW	23kDa
SDS-PAGE MW	24kDa
Formulation	PBS with 0.02% sodium azide,50% glycerol,pH7.3.
Storage	Store at -20°C. Avoid freeze / thaw cycles.

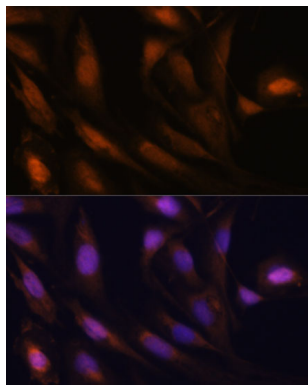
## Application Details

WB □ 1:200 - 1:2000 IF □ 1:50 - 1:200

## Images



Western blot analysis of extracts of various cell lines, using UBE2S antibody.



Immunofluorescence analysis of U-2 OS cells using UBE2S antibody.

## Background

This gene encodes a member of the ubiquitin-conjugating enzyme family. The encoded protein is able to form a thiol ester linkage with ubiquitin in a ubiquitin activating enzyme-dependent manner, a characteristic property of ubiquitin carrier proteins.

Note: This product is for in vitro research use only and is not intended for use in humans or animals.