

MRPL11 Rabbit Polyclonal Antibody

Catalog No: #54886

Package Size: #54886-1 50ul #54886-2 100ul

Orders: order@signalwayantibody.comSupport: tech@signalwayantibody.com

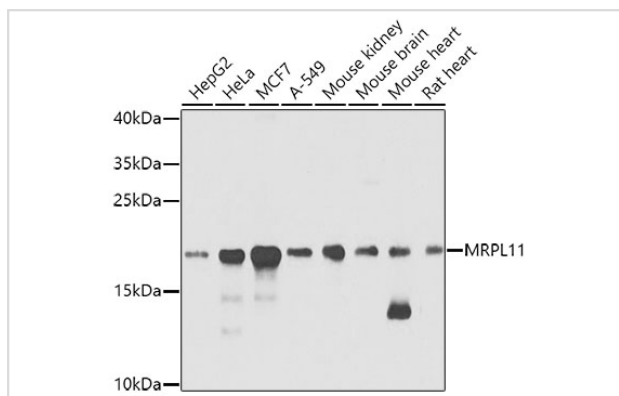
Description

Product Name	MRPL11 Rabbit Polyclonal Antibody
Host Species	Rabbit
Clonality	Polyclonal
Isotype	IgG
Purification	Affinity purification
Applications	WB
Species Reactivity	Human,Mouse,Rat
Immunogen Description	Recombinant fusion protein of human MRPL11 (NP_057134.1).
Other Names	MRPL11;CGI-113;L11MT;MRP-L11
Accession No.	Uniprot:Q9Y3B7GeneID:65003
Calculated MW	18kDa/19kDa/20kDa
SDS-PAGE MW	21kDa
Formulation	PBS with 0.02% sodium azide,50% glycerol,pH7.3.
Storage	Store at -20°C. Avoid freeze / thaw cycles.

Application Details

WB □ 1:500 - 1:2000

Images



Western blot analysis of extracts of various cell lines, using MRPL11 antibody.

Background

This nuclear gene encodes a 39S subunit component of the mitochondrial ribosome. Alternative splicing results in multiple transcript variants. Pseudogenes for this gene are found on chromosomes 5 and 12.

Note: This product is for in vitro research use only and is not intended for use in humans or animals.