

NAPSA Rabbit Polyclonal Antibody

Catalog No: #54921

Package Size: #54921-1 50ul #54921-2 100ul

Orders: order@signalwayantibody.comSupport: tech@signalwayantibody.com

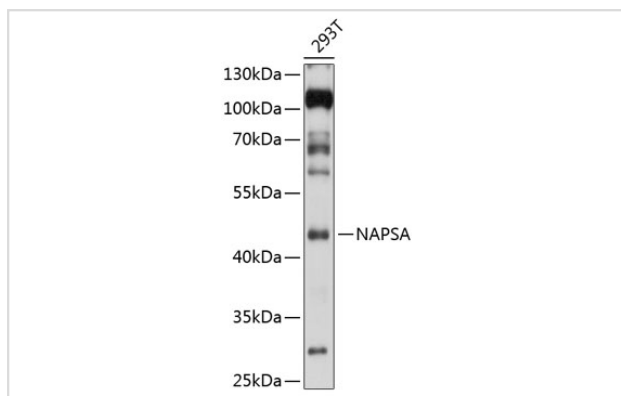
Description

| | |
|-----------------------|--|
| Product Name | NAPSA Rabbit Polyclonal Antibody |
| Host Species | Rabbit |
| Clonality | Polyclonal |
| Isotype | IgG |
| Purification | Affinity purification |
| Applications | WB,IF |
| Species Reactivity | Human,Mouse,Rat |
| Immunogen Description | Recombinant fusion protein of human NAPSA (NP_004842.1). |
| Other Names | NAPSA;KAP;Kdap;NAP1;NAPA;SNAPA;napsin-A;Napsin A |
| Accession No. | Swiss Prot:O96009GeneID:9476 |
| Calculated MW | 45kDa |
| SDS-PAGE MW | 45kDa |
| Formulation | Buffer: PBS with 0.02% sodium azide,50% glycerol,pH7.3. |
| Storage | Store at -20°C. Avoid freeze / thaw cycles. |

Application Details

WB □ 1:500 - 1:2000 IF □ 1:50 - 1:200

Images



Western blot analysis of extracts of 293T cells, using NAPSA at 1:1000 dilution.

Background

This gene encodes a member of the peptidase A1 family of aspartic proteases. The encoded preproprotein is proteolytically processed to generate an activation peptide and the mature protease. The activation peptides of aspartic proteinases function as inhibitors of the protease active site. These peptide segments, or pro-parts, are deemed important for correct folding, targeting, and control of the activation of aspartic proteinase zymogens. The encoded protease may play a role in the proteolytic processing of pulmonary surfactant protein B in the lung and may function in protein catabolism in the renal proximal tubules. This gene has been described as a marker for lung adenocarcinoma and renal cell carcinoma.

Note: This product is for in vitro research use only and is not intended for use in humans or animals.