

CD14 Rabbit Polyclonal Antibody

Catalog No: #54927



Package Size: #54927-1 50ul #54927-2 100ul

Orders: order@signalwayantibody.com

Support: tech@signalwayantibody.com

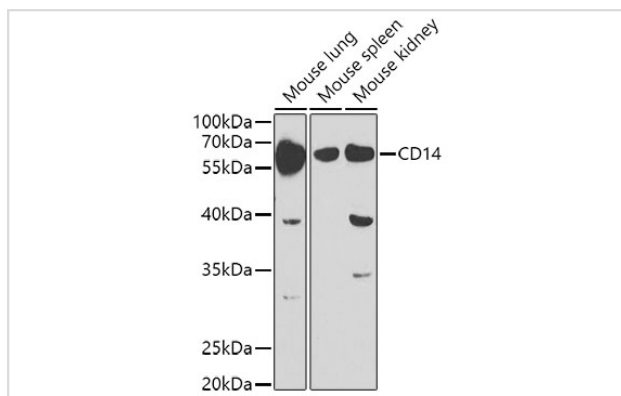
Description

Product Name	CD14 Rabbit Polyclonal Antibody
Host Species	Rabbit
Clonality	Polyclonal
Isotype	IgG
Purification	Affinity purification
Applications	WB,IHC,IF
Species Reactivity	Human,Mouse,Rat
Immunogen Description	Recombinant fusion protein of human CD14 (NP_001167576.1).
Other Names	CD14
Accession No.	Swiss Prot:P08571GenelD:929
Calculated MW	40kDa
SDS-PAGE MW	70kDa
Formulation	Buffer: PBS with 0.02% sodium azide,50% glycerol,pH7.3.
Storage	Store at -20°C. Avoid freeze / thaw cycles.

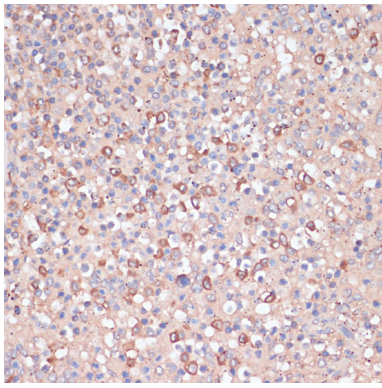
Application Details

WB □ 1:500 - 1:2000 IHC □ 1:50 - 1:200 IF □ 1:50 - 1:200

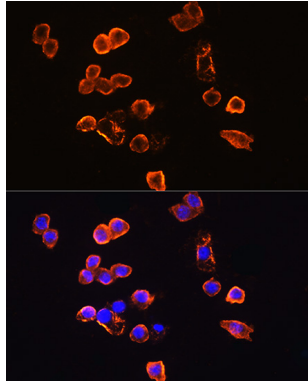
Images



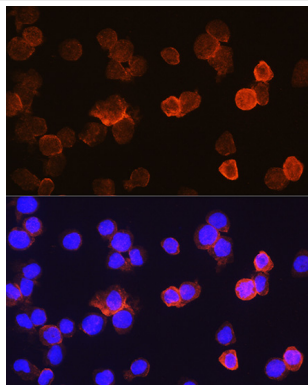
Western blot analysis of extracts of various cell lines, using CD14 at 1:1000 dilution.



Immunohistochemistry of paraffin-embedded human spleen using CD14 at dilution of 1:100 (40x lens).



Immunofluorescence analysis of RAW264.7 cells using CD14 at dilution of 1:100. Blue: DAPI for nuclear staining.



Immunofluorescence analysis of THP-1 cells using CD14 at dilution of 1:100. Blue: DAPI for nuclear staining.

Background

The protein encoded by this gene is a surface antigen that is preferentially expressed on monocytes/macrophages. It cooperates with other proteins to mediate the innate immune response to bacterial lipopolysaccharide. Alternative splicing results in multiple transcript variants encoding the same protein.

Published Papers

el at., Single-cell analysis reveals the immune heterogeneity and interactions in lungs undergoing hepatic ischemia-reperfusion
Immunopharmacol On 2023 Nov;by Chen Zhang¹, Mingwei Sheng², et al.. PMID:37844464, , (2023)

[PMID:37844464](https://pubmed.ncbi.nlm.nih.gov/37844464/)

Note: This product is for in vitro research use only and is not intended for use in humans or animals.