

## ELAVL2 Rabbit Polyclonal Antibody

Catalog No: #54941

Package Size: #54941-1 50ul #54941-2 100ul

Orders: [order@signalwayantibody.com](mailto:order@signalwayantibody.com)Support: [tech@signalwayantibody.com](mailto:tech@signalwayantibody.com)

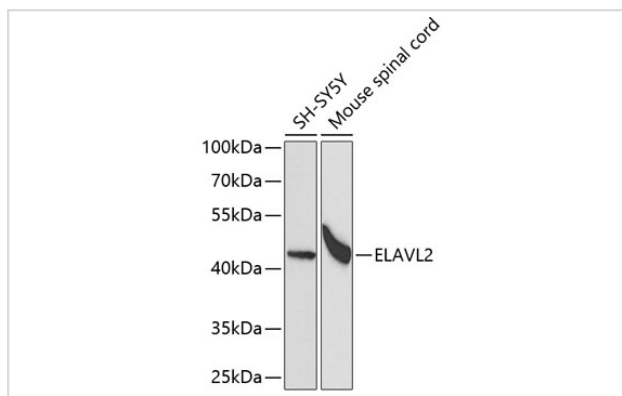
## Description

Product Name	ELAVL2 Rabbit Polyclonal Antibody
Host Species	Rabbit
Clonality	Polyclonal
Isotype	IgG
Purification	Affinity purification
Applications	WB,IHC
Species Reactivity	Human,Mouse,Rat
Immunogen Description	A synthetic peptide of human ELAVL2 (NP_004423.2).
Other Names	ELAVL2;HEL-N1;HELN1;HUB
Accession No.	Uniprot:Q12926GeneID:1993
Calculated MW	38kDa/39kDa
SDS-PAGE MW	44kDa
Formulation	PBS with 0.02% sodium azide,50% glycerol,pH7.3.
Storage	Store at -20°C. Avoid freeze / thaw cycles.

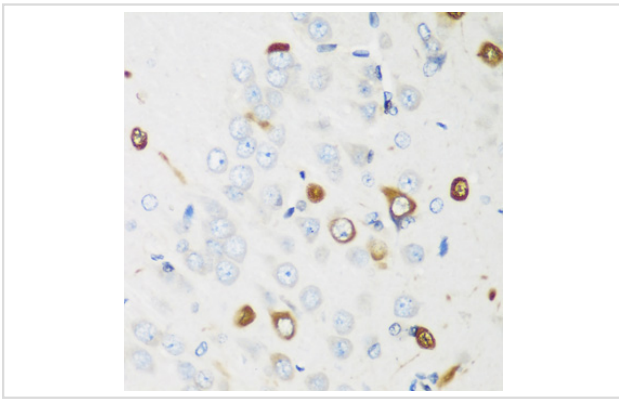
## Application Details

WB □ 1:1000 - 1:2000 IHC □ 1:50 - 1:200

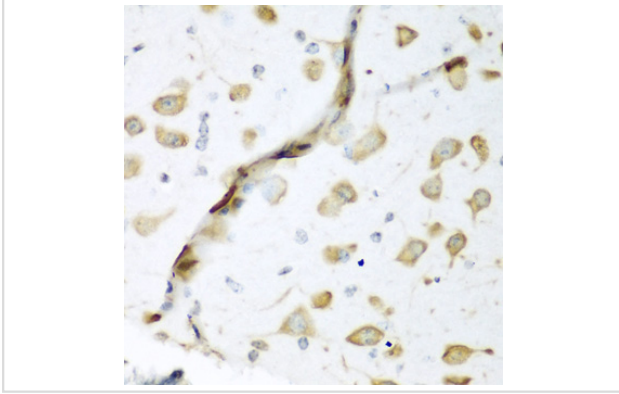
## Images



Western blot analysis of extracts of various cell lines, using ELAVL2 antibody.



Immunohistochemistry of paraffin-embedded rat brain using ELAVL2 antibody.



Immunohistochemistry of paraffin-embedded mouse brain using ELAVL2 antibody.

## Background

The protein encoded by this gene is a neural-specific RNA-binding protein that is known to bind to several 3' UTRs, including its own and also that of FOS and ID. The encoded protein may recognize a GAAA motif in the RNA. Three transcript variants encoding two different isoforms have been found for this gene.

Note: This product is for in vitro research use only and is not intended for use in humans or animals.