

## LIPA Rabbit Polyclonal Antibody

Catalog No: #54994

Package Size: #54994-1 50ul #54994-2 100ul

Orders: [order@signalwayantibody.com](mailto:order@signalwayantibody.com)Support: [tech@signalwayantibody.com](mailto:tech@signalwayantibody.com)

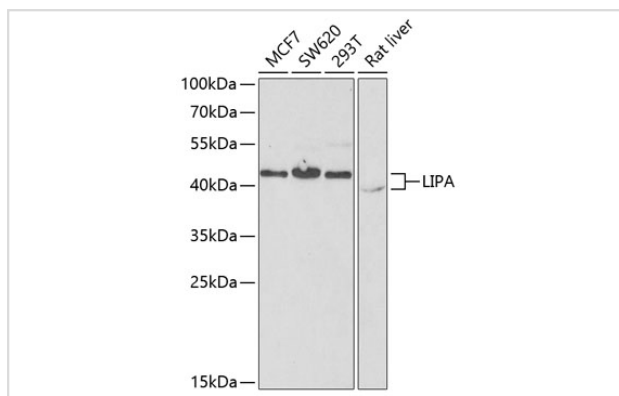
## Description

Product Name	LIPA Rabbit Polyclonal Antibody
Host Species	Rabbit
Clonality	Polyclonal
Isotype	IgG
Purification	Affinity purification
Applications	WB,IHC
Species Reactivity	Human,Rat
Immunogen Description	Recombinant fusion protein of human LIPA (NP_001121077.1).
Other Names	LIPA;CESD;LAL;lipase A
Accession No.	Swiss Prot:P38571GeneID:3988
Calculated MW	39kDa/45kDa
SDS-PAGE MW	40-45kDa
Formulation	Buffer: PBS with 0.02% sodium azide,50% glycerol,pH7.3.
Storage	Store at -20°C. Avoid freeze / thaw cycles.

## Application Details

WB □ 1:500 - 1:2000 IHC □ 1:50 - 1:200

## Images



Western blot analysis of extracts of various cell lines, using LIPA at 1:1000 dilution.

## Background

This gene encodes lipase A, the lysosomal acid lipase (also known as cholesterol ester hydrolase). This enzyme functions in the lysosome to catalyze the hydrolysis of cholesteryl esters and triglycerides. Mutations in this gene can result in Wolman disease and cholesteryl ester storage disease.

Alternatively spliced transcript variants have been found for this gene.

---

Note: This product is for in vitro research use only and is not intended for use in humans or animals.