

NR2C1 Rabbit Polyclonal Antibody

Catalog No: #55010



Package Size: #55010-1 50ul #55010-2 100ul

Orders: order@signalwayantibody.com

Support: tech@signalwayantibody.com

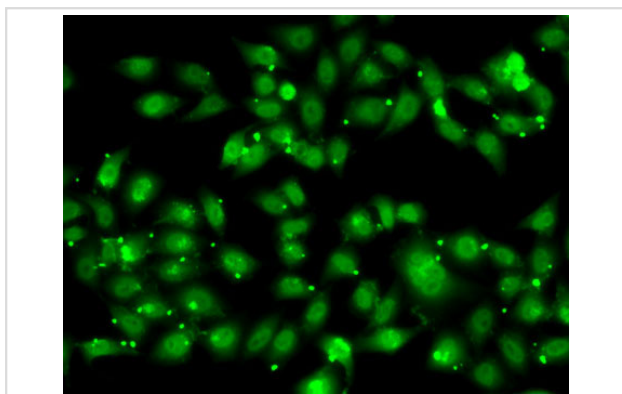
Description

| | |
|-----------------------|--|
| Product Name | NR2C1 Rabbit Polyclonal Antibody |
| Host Species | Rabbit |
| Clonality | Polyclonal |
| Isotype | IgG |
| Purification | Affinity purification |
| Applications | WB,IF |
| Species Reactivity | Human,Mouse |
| Immunogen Description | Recombinant fusion protein of human NR2C1 (NP_003288.2). |
| Other Names | NR2C1;TR2 |
| Accession No. | Swiss Prot:P13056GenelD:7181 |
| Calculated MW | 51kDa/53kDa/67kDa |
| SDS-PAGE MW | 75kDa |
| Formulation | Buffer: PBS with 0.02% sodium azide,50% glycerol,pH7.3. |
| Storage | Store at -20°C. Avoid freeze / thaw cycles. |

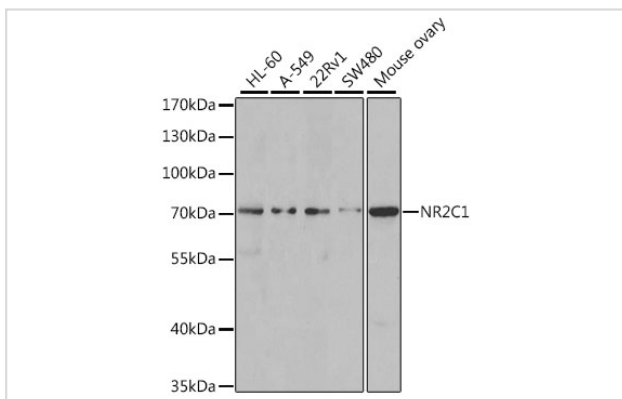
Application Details

WB 1:500 - 1:2000 IF 1:50 - 1:200

Images



Immunofluorescence analysis of MCF7 cells using NR2C1 .



Western blot analysis of extracts of various cell lines, using NR2C1 at 1:1000 dilution.

Background

This gene encodes a nuclear hormone receptor characterized by a highly conserved DNA binding domain (DBD), a variable hinge region, and a carboxy-terminal ligand binding domain (LBD) that is typical for all members of the steroid/thyroid hormone receptor superfamily. This protein also belongs to a large family of ligand-inducible transcription factors that regulate gene expression by binding to specific DNA sequences within promoters of target genes. Multiple alternatively spliced transcript variants have been described, but the full-length nature of some of these variants has not been determined.

Note: This product is for in vitro research use only and is not intended for use in humans or animals.