

## Bcl-2 Antibody

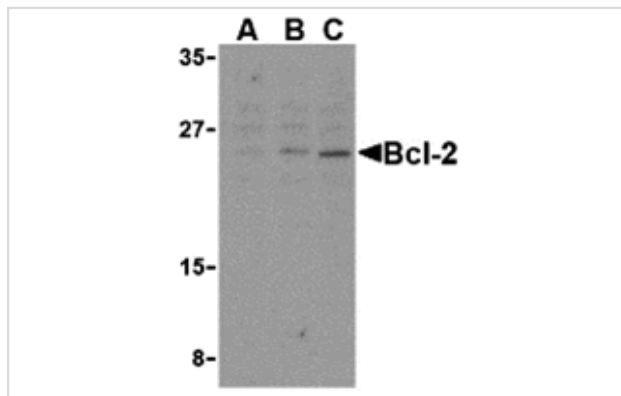
Catalog No: #24246

Orders: [order@signalwayantibody.com](mailto:order@signalwayantibody.com)Support: [tech@signalwayantibody.com](mailto:tech@signalwayantibody.com)

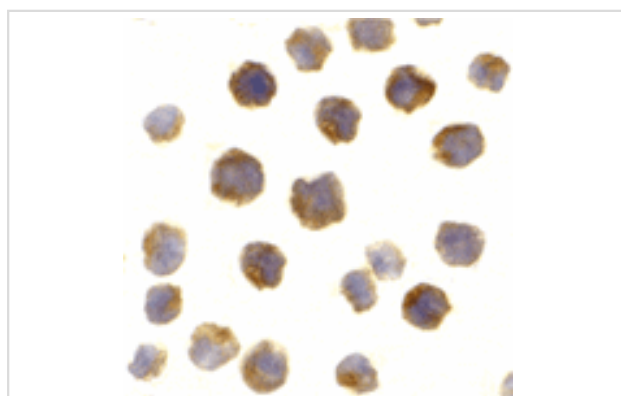
## Description

Product Name	Bcl-2 Antibody
Host Species	Rabbit
Clonality	Polyclonal
Purification	Bcl-2 Antibody is affinity chromatography purified via peptide column.
Applications	ELISA WB ICC
Species Reactivity	Hu
Immunogen Type	Peptide
Immunogen Description	Raised against a peptide corresponding to 14 amino acids near the middle of human Bcl-2.
Target Name	Bcl-2
Accession No.	AAH27258
Concentration	1mg/ml
Formulation	Supplied in PBS containing 0.02% sodium azide.
Storage	Can be stored at -20°C, stable for one year. As with all antibodies care should be taken to avoid repeated freeze thaw cycles. Antibodies should not be exposed to prolonged high temperatures.

## Images



Western blot analysis of Bcl-2 in A-20 cell lysates with Bcl-2 antibody at (A) 1, (B) 2, and (C) 4 ug/mL.



Immunocytochemistry of Bcl-2 in A20 cells with Bcl-2 antibody at 2 ug/mL.

## Background

Apoptosis plays a major role in normal organism development, tissue homeostasis, and removal of damaged cells. Disruption of this process has been implicated in a variety of diseases such as cancer. Bcl-2 is the founding member of a family of over 20 proteins that are critical regulators of apoptosis. These can be divided into two classes: those that inhibit apoptosis and those that promote cell death. Bcl-2 is an inner mitochondrial membrane protein that inhibits apoptosis. It is thought to act by interacting with pro-apoptotic Bcl-2 family members such as Bak and Bad. Overexpression of Bcl-2 has been linked to human cancers such as B-cell lymphoma and prostate cancer.

## Published Papers

---

el at., BAD overexpression inhibits cell growth and induces apoptosis via mitochondrial-dependent pathway in non-small cell lung cancer. In Cancer Cell Int on 2013 Jun 1 by Jiang L, Luo M, et al.. PMID:23725574, , (2013)

[PMID:23725574](#)

---

Note: This product is for in vitro research use only and is not intended for use in humans or animals.