

## NASP Rabbit Polyclonal Antibody

Catalog No: #55048



Package Size: #55048-1 50ul #55048-2 100ul

Orders: [order@signalwayantibody.com](mailto:order@signalwayantibody.com)Support: [tech@signalwayantibody.com](mailto:tech@signalwayantibody.com)

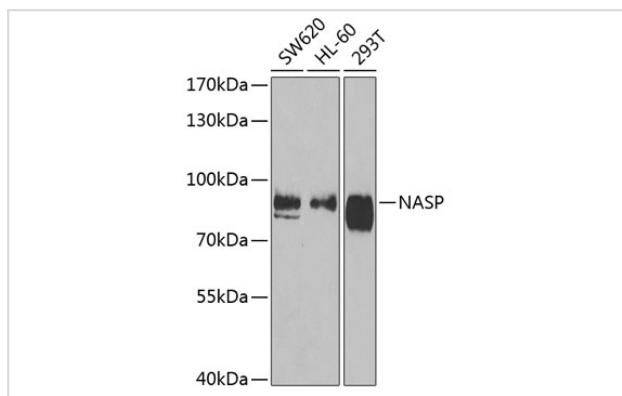
## Description

Product Name	NASP Rabbit Polyclonal Antibody
Host Species	Rabbit
Clonality	Polyclonal
Isotype	IgG
Purification	Affinity purification
Applications	WB,IHC,IF
Species Reactivity	Human,Mouse,Rat
Immunogen Description	Recombinant fusion protein of human NASP (NP_689511.2).
Other Names	NASP;FLB7527;HMDRA1;PRO1999
Accession No.	Swiss Prot:P49321GeneID:4678
Calculated MW	48kDa/78kDa/85kDa/86kDa
SDS-PAGE MW	85kDa
Formulation	Buffer: PBS with 0.02% sodium azide,50% glycerol,pH7.3.
Storage	Store at -20°C. Avoid freeze / thaw cycles.

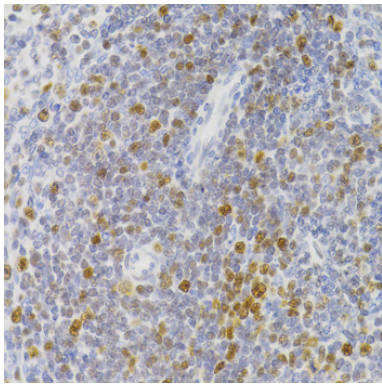
## Application Details

WB □ 1:500 - 1:2000 IHC □ 1:50 - 1:200 IF □ 1:50 - 1:200

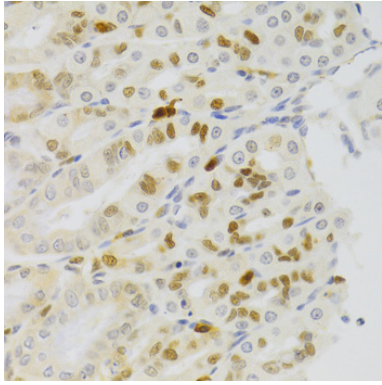
## Images



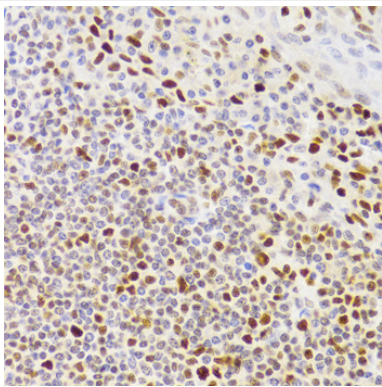
Western blot analysis of extracts of various cell lines, using NASP at 1:1000 dilution.



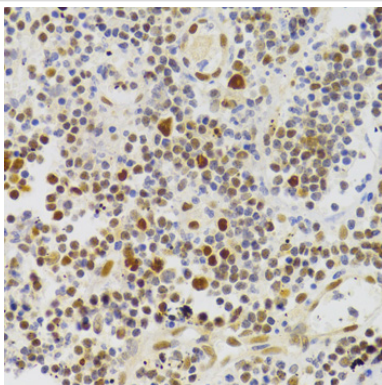
Immunohistochemistry of paraffin-embedded rat spleen using NASP at dilution of 1:100 (40x lens).



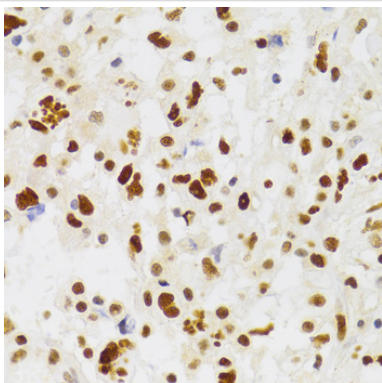
Immunohistochemistry of paraffin-embedded rat stomach using NASP at dilution of 1:100 (40x lens).



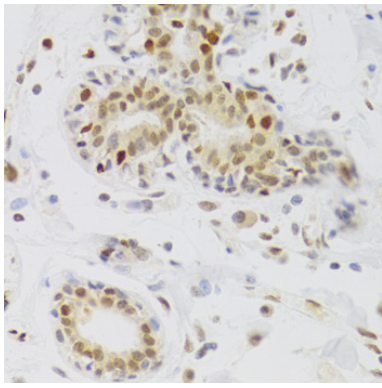
Immunohistochemistry of paraffin-embedded human tonsil using NASP at dilution of 1:100 (40x lens).



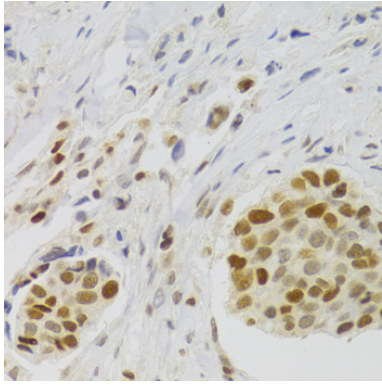
Immunohistochemistry of paraffin-embedded human appendicitis using NASP at dilution of 1:100 (40x lens).



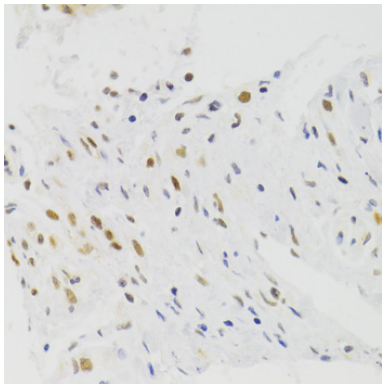
Immunohistochemistry of paraffin-embedded human brain astrocytoma using NASP at dilution of 1:100 (40x lens).



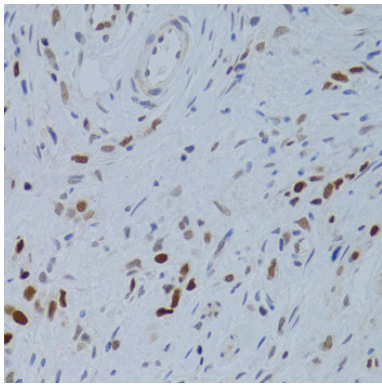
Immunohistochemistry of paraffin-embedded human breast using NASP at dilution of 1:100 (40x lens).



Immunohistochemistry of paraffin-embedded human breast cancer using NASP at dilution of 1:100 (40x lens).



Immunohistochemistry of paraffin-embedded human stomach using NASP at dilution of 1:100 (40x lens).



Immunohistochemistry of paraffin-embedded human gastric cancer using NASP at dilution of 1:100 (40x lens).

## Background

This gene encodes a H1 histone binding protein that is involved in transporting histones into the nucleus of dividing cells. Multiple isoforms are encoded by transcript variants of this gene. The somatic form is expressed in all mitotic cells, is localized to the nucleus, and is coupled to the cell cycle. The testicular form is expressed in embryonic tissues, tumor cells, and the testis. In male germ cells, this protein is localized to the cytoplasm of primary spermatocytes, the nucleus of spermatids, and the periacrosomal region of mature spermatozoa.

---

Note: This product is for in vitro research use only and is not intended for use in humans or animals.