

## EIF2B2 Rabbit Polyclonal Antibody

Catalog No: #55086



Package Size: #55086-1 50ul #55086-2 100ul

Orders: order@signalwayantibody.com

Support: tech@signalwayantibody.com

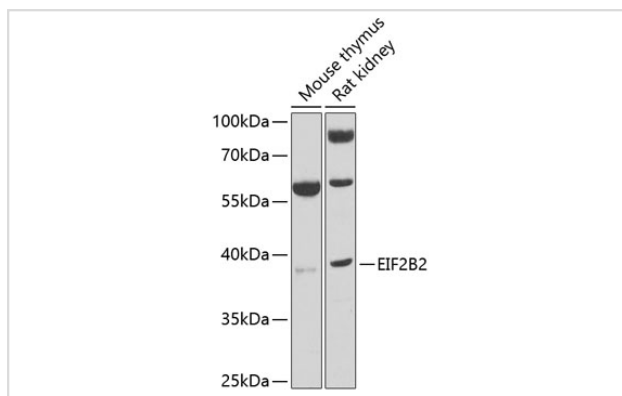
## Description

Product Name	EIF2B2 Rabbit Polyclonal Antibody
Host Species	Rabbit
Clonality	Polyclonal
Isotype	IgG
Purification	Affinity purification
Applications	WB,IHC,IF
Species Reactivity	Human,Mouse,Rat
Immunogen Description	Recombinant fusion protein of human EIF2B2 (NP_055054.1).
Other Names	EIF2B2;EIF-2Bbeta;EIF2B
Accession No.	Swiss Prot:P49770GeneID:8892
Calculated MW	38kDa
SDS-PAGE MW	39kDa
Formulation	Buffer: PBS with 0.02% sodium azide,50% glycerol,pH7.3.
Storage	Store at -20°C. Avoid freeze / thaw cycles.

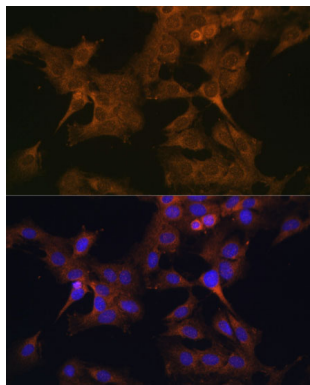
## Application Details

WB □ 1:500 - 1:2000 IHC □ 1:50 - 1:200 IF □ 1:50 - 1:200 IP □ 1:50 - 1:200

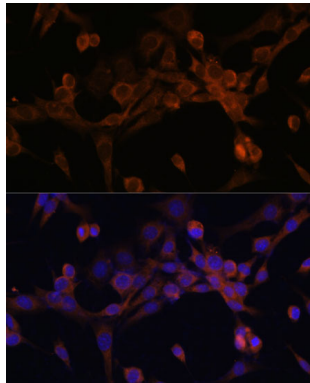
## Images



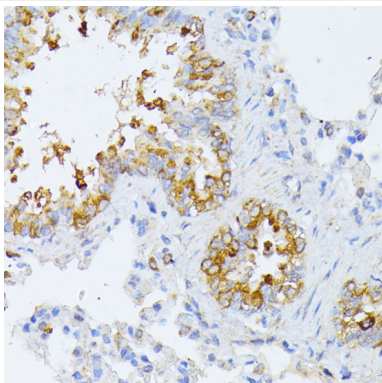
Western blot analysis of extracts of various cell lines, using EIF2B2 at 1:1000 dilution.



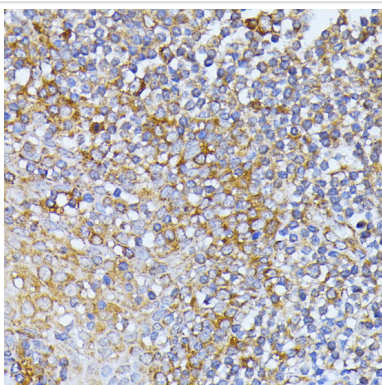
Immunofluorescence analysis of C6 cells using EIF2B2 at dilution of 1:100. Blue: DAPI for nuclear staining.



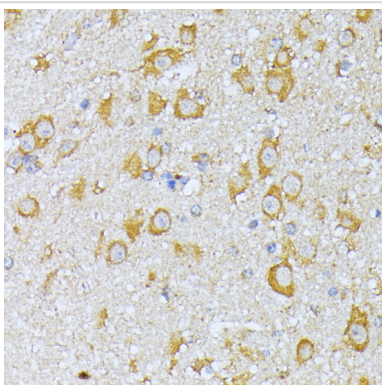
Immunofluorescence analysis of NIH/3T3 cells using EIF2B2 at dilution of 1:100. Blue: DAPI for nuclear staining.



Immunohistochemistry of paraffin-embedded rat lung using EIF2B2 at dilution of 1:100 (40x lens).



Immunohistochemistry of paraffin-embedded human tonsil using EIF2B2 at dilution of 1:100 (40x lens).



Immunohistochemistry of paraffin-embedded mouse brain using EIF2B2 at dilution of 1:100 (40x lens).

## Background

---

This gene encodes the beta subunit of eukaryotic initiation factor-2B (EIF2B). EIF2B is involved in protein synthesis and exchanges GDP and GTP for its activation and deactivation.

---

Note: This product is for in vitro research use only and is not intended for use in humans or animals.