

TUSC2 Rabbit Polyclonal Antibody

Catalog No: #55109



Package Size: #55109-1 50ul #55109-2 100ul

Orders: order@signalwayantibody.comSupport: tech@signalwayantibody.com

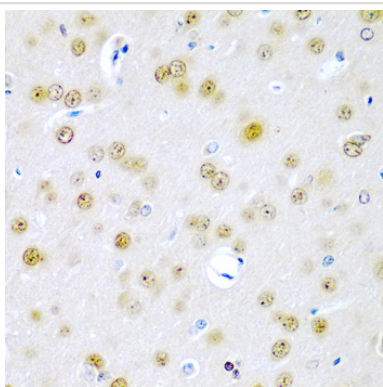
Description

Product Name	TUSC2 Rabbit Polyclonal Antibody
Host Species	Rabbit
Clonality	Polyclonal
Isotype	IgG
Purification	Affinity purification
Applications	WB,IHC
Species Reactivity	Human,Mouse,Rat
Immunogen Description	Recombinant fusion protein of human TUSC2 (NP_009206.1).
Other Names	TUSC2;C3orf11;FUS1;PAP;PDAP2
Accession No.	Uniprot:O75896GeneID:11334
Calculated MW	12kDa
SDS-PAGE MW	Refer to Figures
Formulation	PBS with 0.02% sodium azide,50% glycerol,pH7.3.
Storage	Store at -20°C. Avoid freeze / thaw cycles.

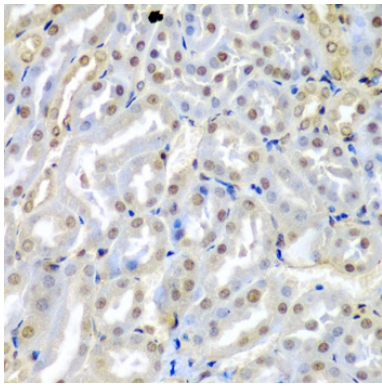
Application Details

WB □ 1:500 - 1:2000 IHC □ 1:50 - 1:200

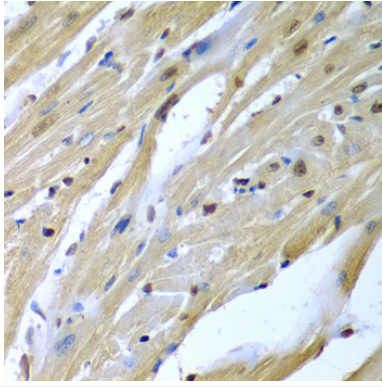
Images



Immunohistochemistry of paraffin-embedded rat brain using TUSC2 antibody.



Immunohistochemistry of paraffin-embedded mouse kidney using TUSC2 antibody.



Immunohistochemistry of paraffin-embedded mouse heart using TUSC2 antibody.

Background

This gene is a highly conserved lung cancer candidate gene. No other information about this gene is currently available.

Note: This product is for in vitro research use only and is not intended for use in humans or animals.