

ELAC2 Rabbit Polyclonal Antibody

Catalog No: #55129



Package Size: #55129-1 50ul #55129-2 100ul

Orders: order@signalwayantibody.com

Support: tech@signalwayantibody.com

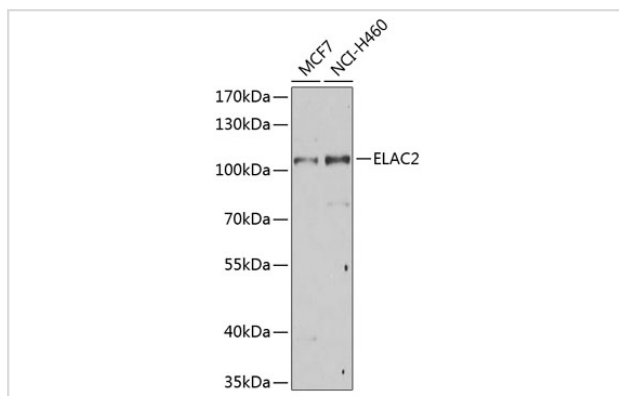
Description

Product Name	ELAC2 Rabbit Polyclonal Antibody
Host Species	Rabbit
Clonality	Polyclonal
Isotype	IgG
Purification	Affinity purification
Applications	WB,IHC
Species Reactivity	Human,Mouse,Rat
Immunogen Description	Recombinant fusion protein of human ELAC2 (NP_776065.1).
Other Names	ELAC2;COXPD17;ELC2;HPC2
Accession No.	Uniprot:Q9BQ52GeneID:60528
Calculated MW	50kDa/56kDa/87kDa/92kDa
SDS-PAGE MW	105kDa
Formulation	PBS with 0.02% sodium azide,50% glycerol,pH7.3.
Storage	Store at -20°C. Avoid freeze / thaw cycles.

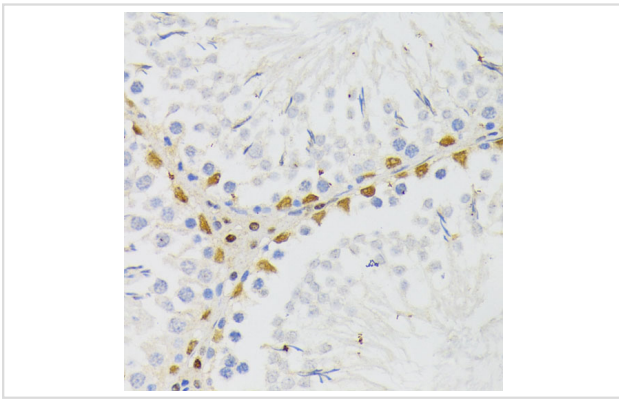
Application Details

WB □ 1:500 - 1:2000 IHC □ 1:50 - 1:200

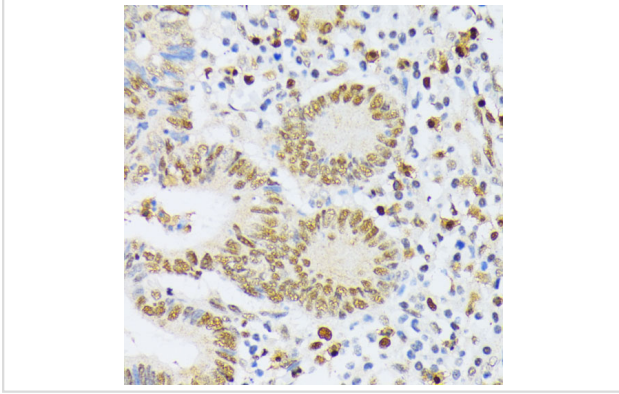
Images



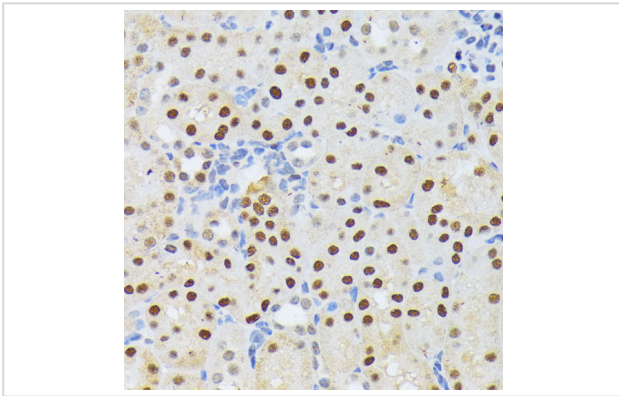
Western blot analysis of extracts of various cell lines, using ELAC2 Antibody.



Immunohistochemistry of paraffin-embedded rat testis using ELAC2 antibody.



Immunohistochemistry of paraffin-embedded human colon carcinoma using ELAC2 antibody.



Immunohistochemistry of paraffin-embedded mouse kidney using ELAC2 antibody.

Background

The protein encoded by this gene has a C-terminal domain with tRNA 3' processing endoribonuclease activity, which catalyzes the removal of the 3' trailer from precursor tRNAs. The protein also interacts with activated Smad family member 2 (Smad2) and its nuclear partner forkhead box H1 (also known as FAST-1), and reduced expression can suppress transforming growth factor-beta induced growth arrest. Mutations in this gene result in an increased risk of prostate cancer. Multiple transcript variants encoding different isoforms have been found for this gene.

Note: This product is for in vitro research use only and is not intended for use in humans or animals.