

ELF5 Rabbit Polyclonal Antibody

Catalog No: #55140



Package Size: #55140-1 50ul #55140-2 100ul

Orders: order@signalwayantibody.comSupport: tech@signalwayantibody.com

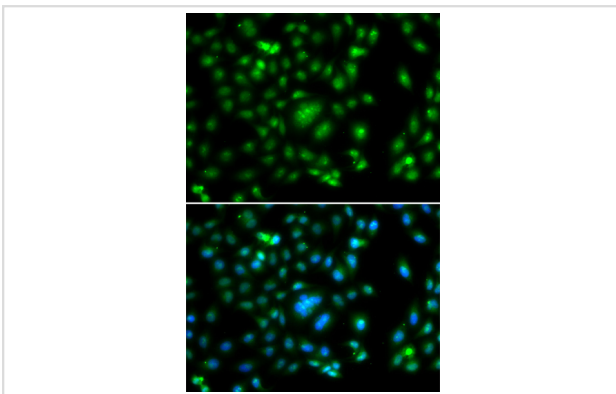
Description

Product Name	ELF5 Rabbit Polyclonal Antibody
Host Species	Rabbit
Clonality	Polyclonal
Isotype	IgG
Purification	Affinity purification
Applications	WB,IHC,IF
Species Reactivity	Human,Mouse,Rat
Immunogen Description	Recombinant fusion protein of human ELF5 (NP_001413.1).
Other Names	ELF5;ESE2
Accession No.	Swiss Prot:Q9UKW6GeneID:2001
Calculated MW	16kDa/18kDa/30kDa/31kDa
SDS-PAGE MW	31kDa
Formulation	Buffer: PBS with 0.02% sodium azide,50% glycerol,pH7.3.
Storage	Store at -20°C. Avoid freeze / thaw cycles.

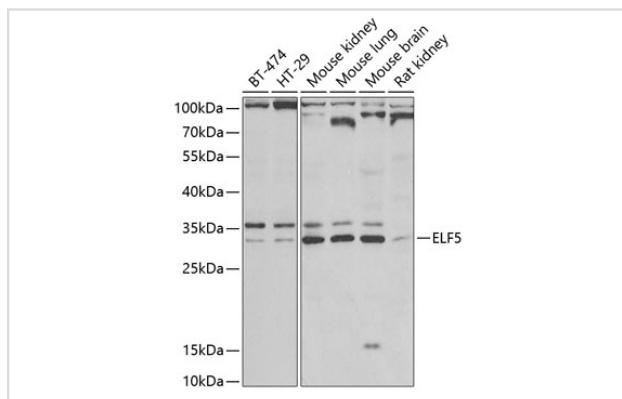
Application Details

WB □ 1:500 - 1:2000 IHC □ 1:50 - 1:200 IF □ 1:50 - 1:200

Images



Immunofluorescence analysis of A549 cells using ELF5 . Blue: DAPI for nuclear staining.



Western blot analysis of extracts of various cell lines, using ELF5 at 1:1000 dilution.

Background

The protein encoded by this gene is a member of an epithelium-specific subclass of the Ets transcription factor family. In addition to its role in regulating the later stages of terminal differentiation of keratinocytes, it appears to regulate a number of epithelium-specific genes found in tissues containing glandular epithelium such as salivary gland and prostate. It has very low affinity to DNA due to its negative regulatory domain at the amino terminus. Several alternatively spliced transcript variants encoding different isoforms have been described for this gene.

Note: This product is for in vitro research use only and is not intended for use in humans or animals.