

MCP-1 Rabbit Polyclonal Antibody

Catalog No: #29548

Package Size: #29548-1 50ul #29548-2 100ul

Orders: order@signalwayantibody.comSupport: tech@signalwayantibody.com

Description

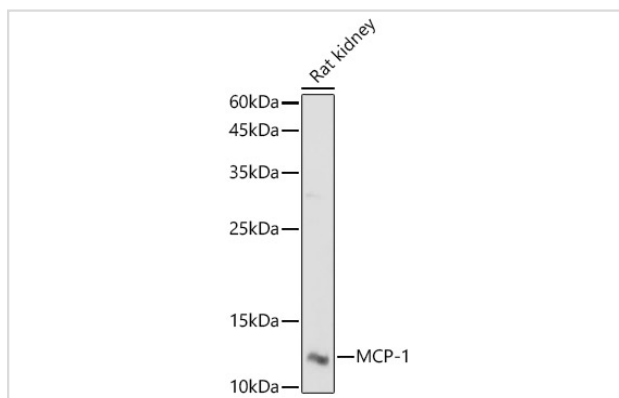
Product Name	MCP-1 Rabbit Polyclonal Antibody
Host Species	Rabbit
Clonality	Polyclonal
Isotype	IgG
Purification	Affinity purification
Applications	WB,IHC
Species Reactivity	Human,Mouse,Rat
Immunogen Description	Recombinant fusion protein of human MCP-1 (NP_002973.1).
Other Names	CCL2;GDCF-2;HC11;HSMCR30;MCAF;MCP-1;MCP1;SCYA2;SMC-CF
Accession No.	Uniprot:P13500GeneID:6347
Calculated MW	11kDa
SDS-PAGE MW	13KDa
Formulation	PBS with 0.02% sodium azide,50% glycerol,pH7.3.
Storage	Store at -20°C. Avoid freeze / thaw cycles.

Application Details

WB 1:500 - 1:2000

IHC 1:50 - 1:200

Images



Western blot analysis of extracts of Rat kidney, using MCP-1 antibody.

Background

This gene is one of several cytokine genes clustered on the q-arm of chromosome 17. Chemokines are a superfamily of secreted proteins involved in immunoregulatory and inflammatory processes. The superfamily is divided into four subfamilies based on the arrangement of N-terminal cysteine residues of the mature peptide. This chemokine is a member of the CC subfamily which is characterized by two adjacent cysteine residues. This cytokine displays chemotactic activity for monocytes and basophils but not for neutrophils or eosinophils. It has been implicated in the pathogenesis of

diseases characterized by monocytic infiltrates, like psoriasis, rheumatoid arthritis and atherosclerosis. It binds to chemokine receptors CCR2 and CCR4.

Note: This product is for in vitro research use only and is not intended for use in humans or animals.