

## DUSP22 Rabbit Polyclonal Antibody

Catalog No: #55162



Package Size: #55162-1 50ul #55162-2 100ul

Orders: [order@signalwayantibody.com](mailto:order@signalwayantibody.com)Support: [tech@signalwayantibody.com](mailto:tech@signalwayantibody.com)

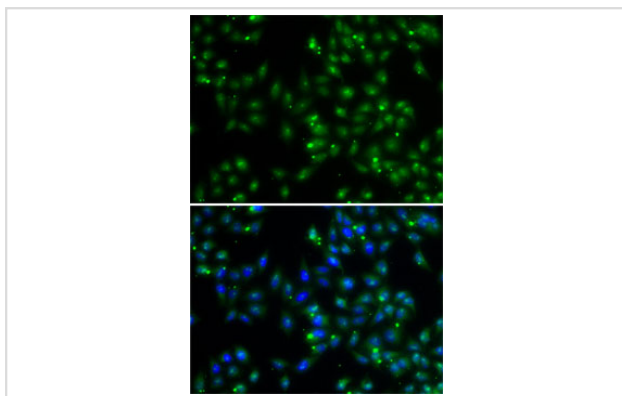
## Description

Product Name	DUSP22 Rabbit Polyclonal Antibody
Host Species	Rabbit
Clonality	Polyclonal
Isotype	IgG
Purification	Affinity purification
Applications	WB,IF
Species Reactivity	Human
Immunogen Description	Recombinant fusion protein of human DUSP22 (NP_064570.1).
Other Names	DUSP22;JKAP;JSP-1;JSP1;LMW-DSP2;LMWDSP2;MKP-x;MKPX;VHX
Accession No.	Swiss Prot:Q9NRW4GeneID:56940
Calculated MW	20kDa/23kDa
SDS-PAGE MW	21kDa
Formulation	Buffer: PBS with 0.02% sodium azide,50% glycerol,pH7.3.
Storage	Store at -20°C. Avoid freeze / thaw cycles.

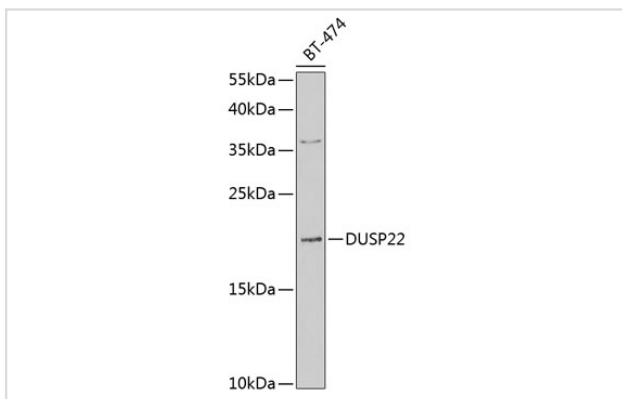
## Application Details

WB □ 1:500 - 1:2000 IF □ 1:50 - 1:100

## Images



Immunofluorescence analysis of A-549 cells using DUSP22 .  
Blue: DAPI for nuclear staining.



Western blot analysis of extracts of BT-474 cells, using DUSP22 at 1:1000 dilution. Secondary antibody: HRP Goat Anti-Rabbit IgG (H+L) at 1:10000 dilution. Lysates/proteins: 25ug per lane. Blocking buffer: 3% nonfat dry milk in TBST. Detection: ECL Enhanced Kit (RM00021). Exposure time: 90s.

## Background

-

Note: This product is for in vitro research use only and is not intended for use in humans or animals.