

# NAT10 Rabbit Polyclonal Antibody

Catalog No: #55166



Package Size: #55166-1 50ul #55166-2 100ul

Orders: [order@signalwayantibody.com](mailto:order@signalwayantibody.com)Support: [tech@signalwayantibody.com](mailto:tech@signalwayantibody.com)

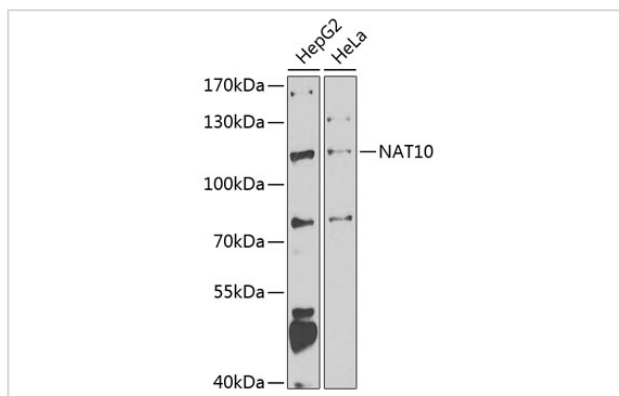
## Description

Product Name	NAT10 Rabbit Polyclonal Antibody
Host Species	Rabbit
Clonality	Polyclonal
Isotype	IgG
Purification	Affinity purification
Applications	WB,IF
Species Reactivity	Human,Rat
Immunogen Description	Recombinant fusion protein of human NAT10 (NP_078938.2).
Other Names	NAT10;ALP;NET43;Kre33
Accession No.	Swiss Prot:Q9H0A0GeneID:55226
Calculated MW	107kDa/115kDa
SDS-PAGE MW	116kDa
Formulation	Buffer: PBS with 0.02% sodium azide,50% glycerol,pH7.3.
Storage	Store at -20°C. Avoid freeze / thaw cycles.

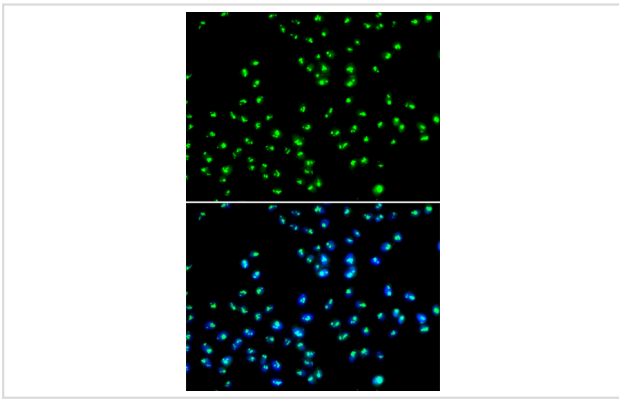
## Application Details

WB □ 1:500 - 1:2000 IF □ 1:50 - 1:100

## Images



Western blot analysis of extracts of various cell lines, using NAT10 at 1:1000 dilution. Secondary antibody: HRP Goat Anti-Rabbit IgG (H+L) at 1:10000 dilution. Lysates/proteins: 25ug per lane. Blocking buffer: 3% nonfat dry milk in TBST. Detection: ECL Enhanced Kit (RM00021). Exposure time: 90s.



Immunofluorescence analysis of MCF-7 cells using NAT10 .  
Blue: DAPI for nuclear staining.

## Background

The protein encoded by this gene is an RNA cytidine acetyltransferase involved in histone acetylation, tRNA acetylation, the biosynthesis of 18S rRNA, and the enhancement of nuclear architecture and chromatin organization.

Note: This product is for in vitro research use only and is not intended for use in humans or animals.