

EEF1A2 Rabbit Polyclonal Antibody

Catalog No: #55180

Package Size: #55180-1 50ul #55180-2 100ul

Orders: order@signalwayantibody.comSupport: tech@signalwayantibody.com

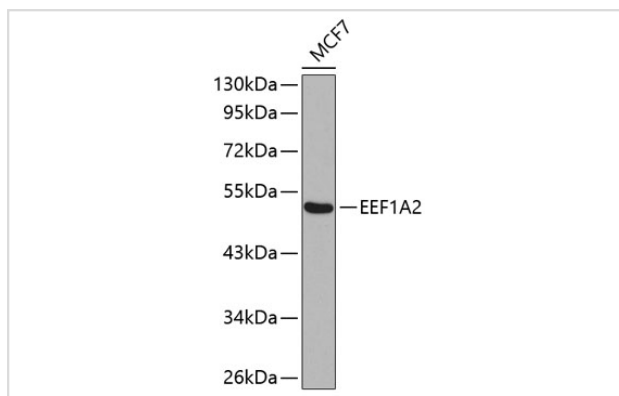
Description

Product Name	EEF1A2 Rabbit Polyclonal Antibody
Host Species	Rabbit
Clonality	Polyclonal
Isotype	IgG
Purification	Affinity purification
Applications	WB,IHC
Species Reactivity	Human,Mouse,Rat
Immunogen Description	Recombinant fusion protein of human EEF1A2 (NP_001949.1).
Other Names	EEF1A2;EEF1AL;EF-1-alpha-2;EF1A;EIEE33;HS1;MRD38;STN;STNL
Accession No.	Swiss Prot:Q05639GeneID:1917
Calculated MW	50kDa
SDS-PAGE MW	50kDa
Formulation	Buffer: PBS with 0.02% sodium azide,50% glycerol,pH7.3.
Storage	Store at -20°C. Avoid freeze / thaw cycles.

Application Details

WB □ 1:2000 - 1:5000 IHC □ 1:50 - 1:200

Images



Western blot analysis of extracts of MCF-7 cells, using EEF1A2 .

Background

This gene encodes an isoform of the alpha subunit of the elongation factor-1 complex, which is responsible for the enzymatic delivery of aminoacyl tRNAs to the ribosome. This isoform (alpha 2) is expressed in brain, heart and skeletal muscle, and the other isoform (alpha 1) is expressed in brain, placenta, lung, liver, kidney, and pancreas. This gene may be critical in the development of ovarian cancer.

Note: This product is for in vitro research use only and is not intended for use in humans or animals.