

UBE2R2 Rabbit Polyclonal Antibody

Catalog No: #55195



Package Size: #55195-1 50ul #55195-2 100ul

Orders: order@signalwayantibody.com

Support: tech@signalwayantibody.com

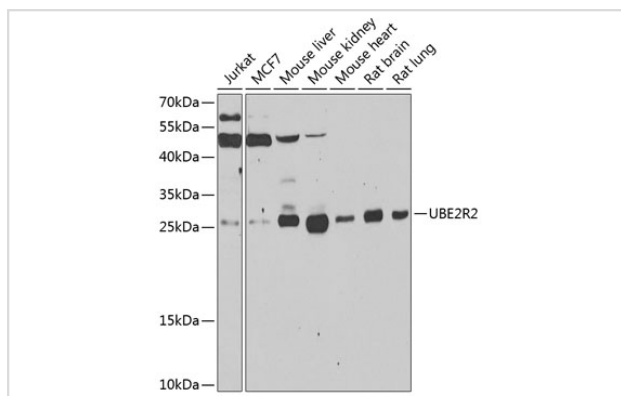
Description

Product Name	UBE2R2 Rabbit Polyclonal Antibody
Host Species	Rabbit
Clonality	Polyclonal
Isotype	IgG
Purification	Affinity purification
Applications	WB,IF
Species Reactivity	Human,Mouse,Rat
Immunogen Description	Recombinant fusion protein of human UBE2R2 (NP_060281.2).
Other Names	UBE2R2;CDC34B;E2-CDC34B;UBC3B
Accession No.	Uniprot:Q712K3GeneID:54926
Calculated MW	27kDa
SDS-PAGE MW	27kDa
Formulation	PBS with 0.02% sodium azide,50% glycerol,pH7.3.
Storage	Store at -20°C. Avoid freeze / thaw cycles.

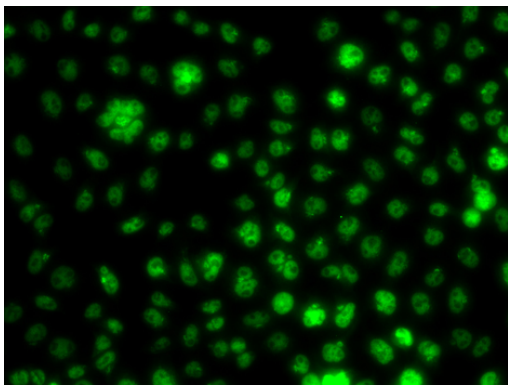
Application Details

WB 1:500 - 1:2000 IF 1:50 - 1:200

Images



Western blot analysis of extracts of various cell lines, using UBE2R2 antibody.



Immunofluorescence analysis of A549 cells using UBE2R2 antibody.

Background

Protein kinase CK2 is a ubiquitous and pleiotropic Ser/Thr protein kinase involved in cell growth and transformation. This gene encodes a protein similar to the E2 ubiquitin conjugating enzyme UBC3/CDC34. Studies suggest that CK2-dependent phosphorylation of this ubiquitin-conjugating enzyme functions by regulating beta-TrCP substrate recognition and induces its interaction with beta-TrCP, enhancing beta-catenin degradation.

Note: This product is for in vitro research use only and is not intended for use in humans or animals.