

TEAD3 Rabbit Polyclonal Antibody

Catalog No: #55224



Package Size: #55224-1 50ul #55224-2 100ul

Orders: order@signalwayantibody.comSupport: tech@signalwayantibody.com

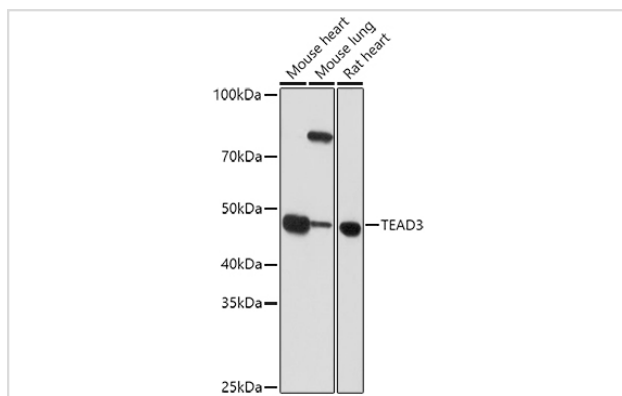
Description

Product Name	TEAD3 Rabbit Polyclonal Antibody
Host Species	Rabbit
Clonality	Polyclonal
Isotype	IgG
Purification	Affinity purification
Applications	WB,IHC,IF
Species Reactivity	Human,Mouse,Rat
Immunogen Description	Recombinant fusion protein of human TEAD3 (NP_003205.2).
Other Names	TEAD3;DTEF-1;ETFR-1;TEAD-3;TEAD5;TEF-5;TEF5
Accession No.	Uniprot:Q99594GeneID:7005
Calculated MW	48kDa
SDS-PAGE MW	49KDa
Formulation	PBS with 0.02% sodium azide,50% glycerol,pH7.3.
Storage	Store at -20°C. Avoid freeze / thaw cycles.

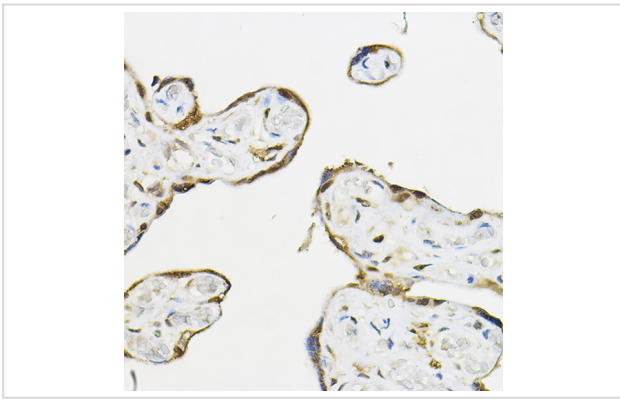
Application Details

WB □ 1:500 - 1:2000 IHC □ 1:50 - 1:200 IF □ 1:50 - 1:200

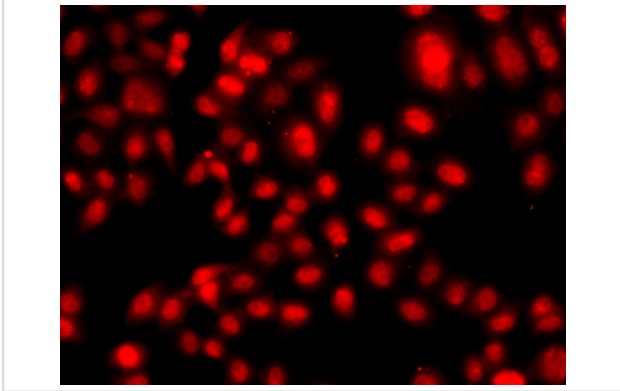
Images



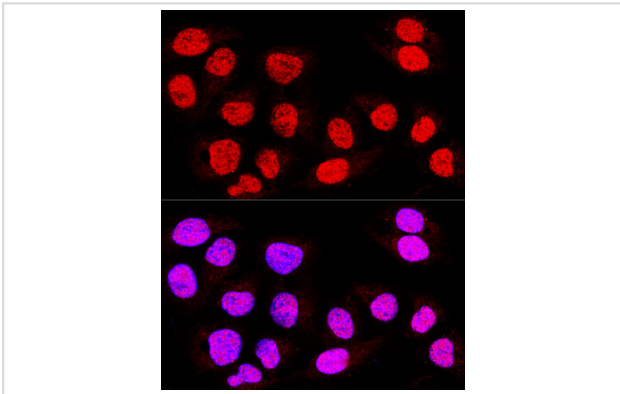
Western blot analysis of extracts of various cell lines, using TEAD3 antibody.



Immunohistochemistry of paraffin-embedded human placenta using TEAD3 Rabbit pAb.



Immunofluorescence analysis of A549 cells using TEAD3 antibody.



Confocal immunofluorescence analysis of U-2 OS cells using TEAD3 Polyclonal Antibody.

Background

This gene product is a member of the transcriptional enhancer factor (TEF) family of transcription factors, which contain the TEA/ATTS DNA-binding domain. It is predominantly expressed in the placenta and is involved in the transactivation of the chorionic somatomammotropin-B gene enhancer. Translation of this protein is initiated at a non-AUG (AUA) start codon.

Note: This product is for in vitro research use only and is not intended for use in humans or animals.