

# THAP1 Rabbit Polyclonal Antibody

Catalog No: #55226



Package Size: #55226-1 50ul #55226-2 100ul

Orders: [order@signalwayantibody.com](mailto:order@signalwayantibody.com)

Support: [tech@signalwayantibody.com](mailto:tech@signalwayantibody.com)

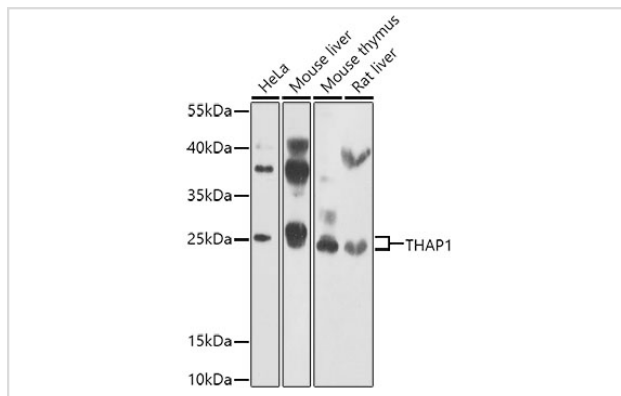
## Description

Product Name	THAP1 Rabbit Polyclonal Antibody
Host Species	Rabbit
Clonality	Polyclonal
Isotype	IgG
Purification	Affinity purification
Applications	WB,IF
Species Reactivity	Human,Mouse,Rat
Immunogen Description	Recombinant fusion protein of human THAP1 (NP_060575.1).
Other Names	THAP1;DYT6
Accession No.	Uniprot:Q9NVV9GeneID:55145
Calculated MW	6kDa/24kDa
SDS-PAGE MW	25kDa
Formulation	PBS with 0.02% sodium azide,50% glycerol,pH7.3.
Storage	Store at -20°C. Avoid freeze / thaw cycles.

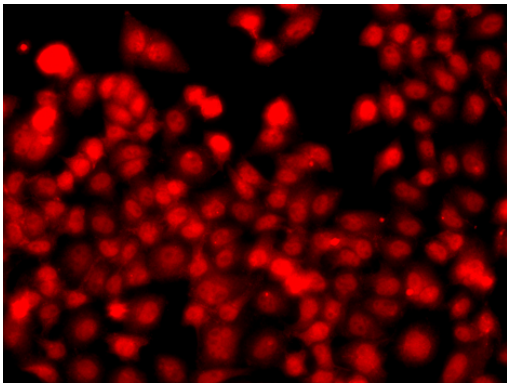
## Application Details

WB □ 1:500 - 1:2000 IF □ 1:50 - 1:200

## Images



Western blot analysis of extracts of various cell lines, using THAP1 antibody.



Immunofluorescence analysis of A549 cells using THAP1 antibody.

## Background

The protein encoded by this gene contains a THAP domain, a conserved DNA-binding domain. This protein colocalizes with the apoptosis response protein PAWR/PAR-4 in promyelocytic leukemia (PML) nuclear bodies, and functions as a proapoptotic factor that links PAWR to PML nuclear bodies. Alternatively spliced transcript variants encoding distinct isoforms have been observed.

Note: This product is for in vitro research use only and is not intended for use in humans or animals.