

## ZFYVE1 Rabbit Polyclonal Antibody

Catalog No: #55246

Package Size: #55246-1 50ul #55246-2 100ul

Orders: [order@signalwayantibody.com](mailto:order@signalwayantibody.com)Support: [tech@signalwayantibody.com](mailto:tech@signalwayantibody.com)

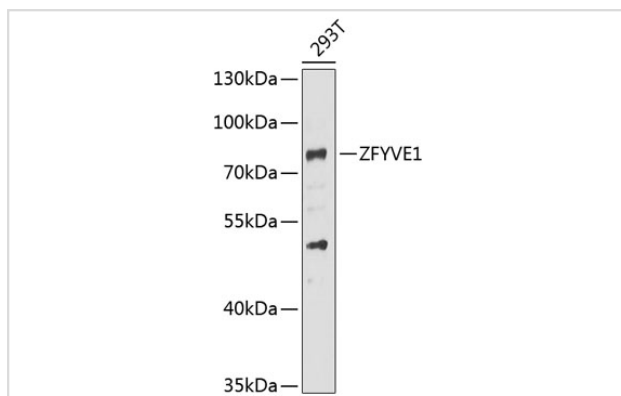
## Description

Product Name	ZFYVE1 Rabbit Polyclonal Antibody
Host Species	Rabbit
Clonality	Polyclonal
Isotype	IgG
Purification	Affinity purification
Applications	WB
Species Reactivity	Human
Immunogen Description	Recombinant fusion protein of human ZFYVE1 (NP_067083.1).
Other Names	ZFYVE1;DFCP1;PPP1R172;SR3;TAFF1;ZNFN2A1
Accession No.	Uniprot:Q9HBF4GeneID:53349
Calculated MW	40kDa/85kDa/87kDa
SDS-PAGE MW	87kDa
Formulation	PBS with 0.02% sodium azide,50% glycerol,pH7.3.
Storage	Store at -20°C. Avoid freeze / thaw cycles.

## Application Details

WB □ 1:500 - 1:2000

## Images



Western blot analysis of extracts of 293T cells, using ZFYVE1 antibody.

## Background

The FYVE domain mediates the recruitment of proteins involved in membrane trafficking and cell signaling to phosphatidylinositol 3-phosphate-containing membranes. This protein contains two zinc-binding FYVE domains in tandem and is reported to localize to the Golgi apparatus. Alternative splicing results in multiple transcript variants.

---

Note: This product is for in vitro research use only and is not intended for use in humans or animals.