

UBIAD1 Rabbit Polyclonal Antibody

Catalog No: #55270



Package Size: #55270-1 50ul #55270-2 100ul

Orders: order@signalwayantibody.comSupport: tech@signalwayantibody.com

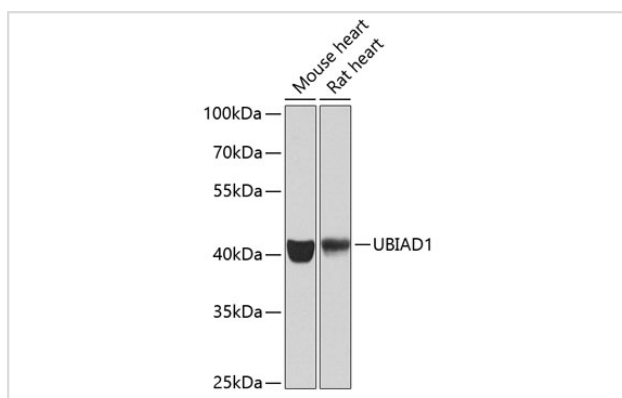
Description

Product Name	UBIAD1 Rabbit Polyclonal Antibody
Host Species	Rabbit
Clonality	Polyclonal
Isotype	IgG
Purification	Affinity purification
Applications	WB,IHC
Species Reactivity	Human,Mouse,Rat
Immunogen Description	A synthetic peptide of human UBIAD1 (NP_037451.1).
Other Names	UBIAD1;SCCD;TERE1
Accession No.	Uniprot:Q9Y5Z9GeneID:29914
Calculated MW	19kDa/36kDa
SDS-PAGE MW	41kDa
Formulation	PBS with 0.02% sodium azide,50% glycerol,pH7.3.
Storage	Store at -20°C. Avoid freeze / thaw cycles.

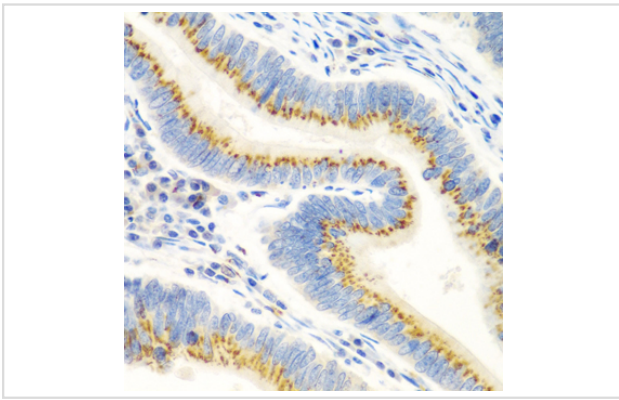
Application Details

WB □ 1:500 - 1:2000 IHC □ 1:100 - 1:200

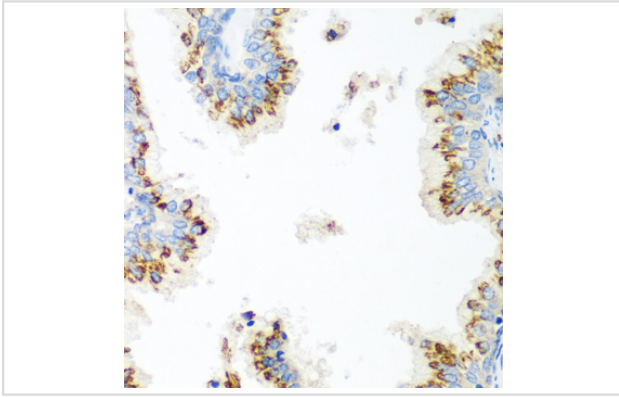
Images



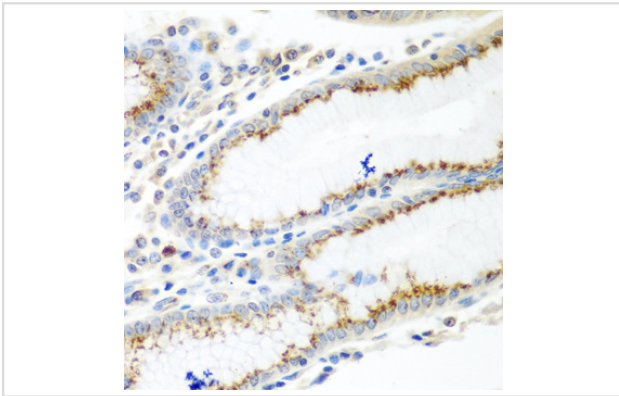
Western blot analysis of extracts of various cell lines, using UBIAD1 antibody.



Immunohistochemistry of paraffin-embedded human colon carcinoma using UBIAD1 antibody.



Immunohistochemistry of paraffin-embedded human prostate using UBIAD1 antibody.



Immunohistochemistry of paraffin-embedded human stomach using UBIAD1 antibody.

Background

This gene encodes a protein thought to be involved in cholesterol and phospholipid metabolism. Mutations in this gene are associated with Schnyder crystalline corneal dystrophy.

Note: This product is for in vitro research use only and is not intended for use in humans or animals.