

TTF2 Rabbit Polyclonal Antibody

Catalog No: #55315



Package Size: #55315-1 50ul #55315-2 100ul

Orders: order@signalwayantibody.comSupport: tech@signalwayantibody.com

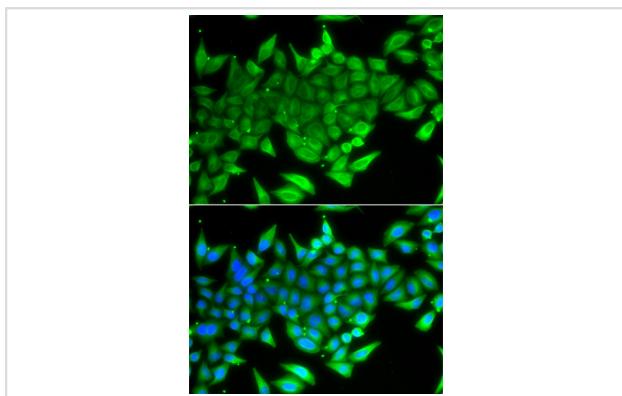
Description

Product Name	TTF2 Rabbit Polyclonal Antibody
Host Species	Rabbit
Clonality	Polyclonal
Isotype	IgG
Purification	Affinity purification
Applications	WB,IF
Species Reactivity	Human
Immunogen Description	Recombinant fusion protein of human TTF2 (NP_003585.3).
Other Names	TTF2;HuF2;ZGRF6
Accession No.	Swiss Prot:Q9UNY4GeneID:8458
Calculated MW	75kDa/129kDa
SDS-PAGE MW	130kDa
Formulation	Buffer: PBS with 0.02% sodium azide,50% glycerol,pH7.3.
Storage	Store at -20°C. Avoid freeze / thaw cycles.

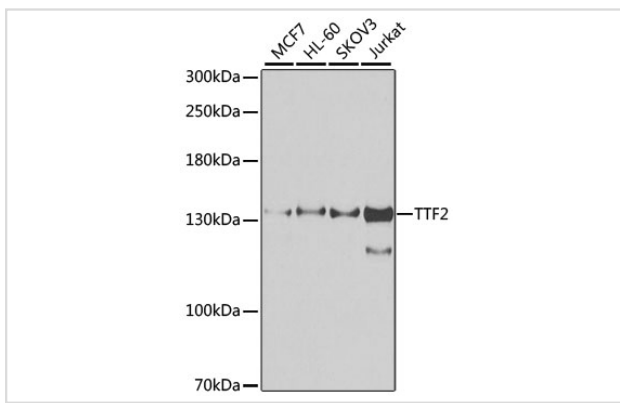
Application Details

WB □ 1:500 - 1:2000 IF □ 1:50 - 1:200

Images



Immunofluorescence analysis of A549 cells using TTF2 . Blue: DAPI for nuclear staining.



Western blot analysis of extracts of various cell lines, using TTF2 at 1:1000 dilution.

Background

This gene encodes a member of the SWI2/SNF2 family of proteins, which play a critical role in altering protein-DNA interactions. The encoded protein has been shown to have dsDNA-dependent ATPase activity and RNA polymerase II termination activity. This protein interacts with cell division cycle 5-like, associates with human splicing complexes, and plays a role in pre-mRNA splicing.

Note: This product is for in vitro research use only and is not intended for use in humans or animals.