

NAT8 Rabbit Polyclonal Antibody

Catalog No: #55321



Package Size: #55321-1 50ul #55321-2 100ul

Orders: order@signalwayantibody.com

Support: tech@signalwayantibody.com

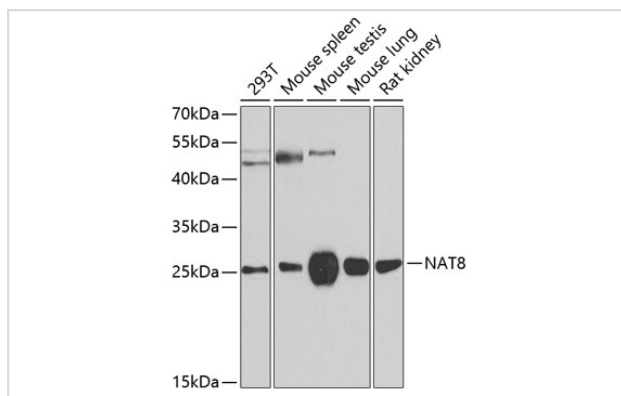
Description

Product Name	NAT8 Rabbit Polyclonal Antibody
Host Species	Rabbit
Clonality	Polyclonal
Isotype	IgG
Purification	Affinity purification
Applications	WB,IHC
Species Reactivity	Human,Mouse,Rat
Immunogen Description	Recombinant protein of human NAT8
Other Names	NAT8;ATase2;CCNAT;CML1;GLA;Hcml1;TSC501;TSC510
Accession No.	Swiss Prot:Q9UHE5GeneID:9027
Calculated MW	25kDa
SDS-PAGE MW	26kDa
Formulation	Buffer: PBS with 0.02% sodium azide,50% glycerol,pH7.3.
Storage	Store at -20°C. Avoid freeze / thaw cycles.

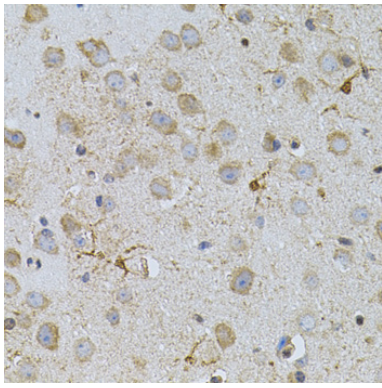
Application Details

WB □ 1:500 - 1:2000 IHC □ 1:50 - 1:100

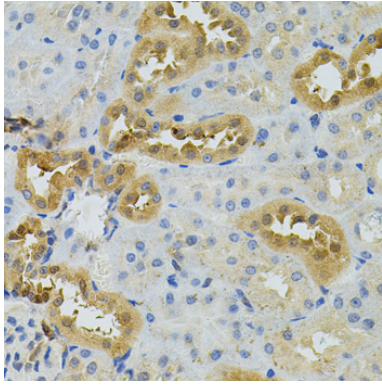
Images



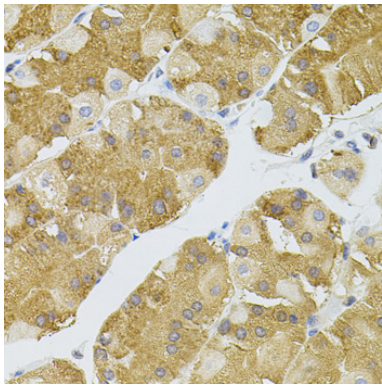
Western blot analysis of extracts of various cell lines, using NAT8 at 1:500 dilution.



Immunohistochemistry of paraffin-embedded mouse brain using NAT8 (40x lens).



Immunohistochemistry of paraffin-embedded rat kidney using NAT8 (40x lens).



Immunohistochemistry of paraffin-embedded human stomach using NAT8 (40x lens).

Background

This gene, isolated using the differential display method to detect tissue-specific genes, is specifically expressed in kidney and liver. The encoded protein shows amino acid sequence similarity to N-acetyltransferases. A similar protein in *Xenopus* affects cell adhesion and gastrulation movements, and may be localized in the secretory pathway. A highly similar paralog is found in a cluster with this gene.

Note: This product is for in vitro research use only and is not intended for use in humans or animals.