

MTMR4 Rabbit Polyclonal Antibody

Catalog No: #55322



Package Size: #55322-1 50ul #55322-2 100ul

Orders: order@signalwayantibody.comSupport: tech@signalwayantibody.com

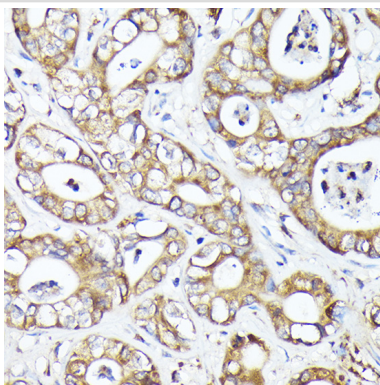
Description

Product Name	MTMR4 Rabbit Polyclonal Antibody
Host Species	Rabbit
Clonality	Polyclonal
Isotype	IgG
Purification	Affinity purification
Applications	IHC
Species Reactivity	Human,Mouse
Immunogen Description	Recombinant fusion protein of human MTMR4 (NP_004678.3).
Other Names	MTMR4;FYVE-DSP2;ZFYVE11
Accession No.	Uniprot:Q9NYA4GeneID:9110
Calculated MW	133kDa
SDS-PAGE MW	Refer to figures
Formulation	PBS with 0.02% sodium azide,50% glycerol,pH7.3.
Storage	Store at -20°C. Avoid freeze / thaw cycles.

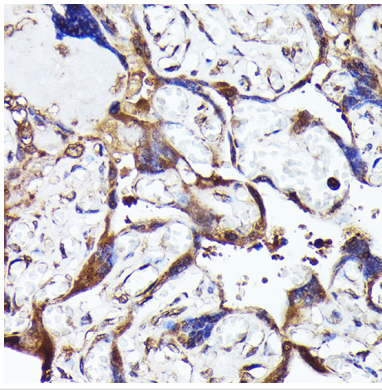
Application Details

IHC 1:50 - 1:100

Images



Immunohistochemistry of paraffin-embedded Human hepatocholangiocarcinoma using MTMR4 Rabbit pAb.



Immunohistochemistry of paraffin-embedded human placenta using MTMR4 Rabbit pAb.

Background

Dephosphorylates proteins phosphorylated on Ser, Thr, and Tyr residues and low molecular weight phosphatase substrate para-nitrophenylphosphate. Phosphorylates phosphatidylinositol 3,4,5-trisphosphate (PIP3).

Note: This product is for in vitro research use only and is not intended for use in humans or animals.