

ZFYVE16 Rabbit Polyclonal Antibody

Catalog No: #55324



Package Size: #55324-1 50ul #55324-2 100ul

Orders: order@signalwayantibody.comSupport: tech@signalwayantibody.com

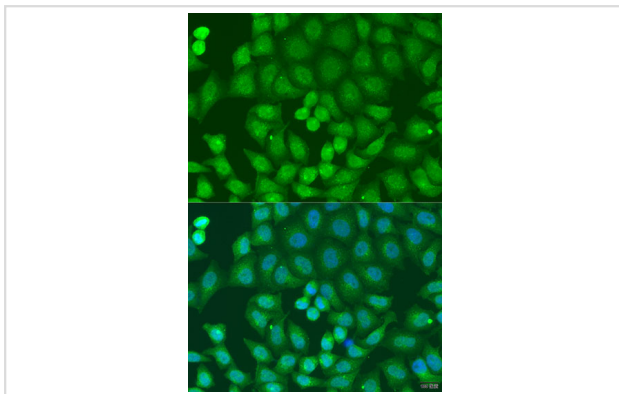
Description

Product Name	ZFYVE16 Rabbit Polyclonal Antibody
Host Species	Rabbit
Clonality	Polyclonal
Isotype	IgG
Purification	Affinity purification
Applications	WB,IHC,IF
Species Reactivity	Human,Mouse
Immunogen Description	Recombinant fusion protein of human ZFYVE16 (NP_055548.3).
Other Names	ZFYVE16;PPP1R69
Accession No.	Swiss Prot:Q7Z3T8GeneID:9765
Calculated MW	88kDa/168kDa
SDS-PAGE MW	100kDa
Formulation	Buffer: PBS with 0.02% sodium azide,50% glycerol,pH7.3.
Storage	Store at -20°C. Avoid freeze / thaw cycles.

Application Details

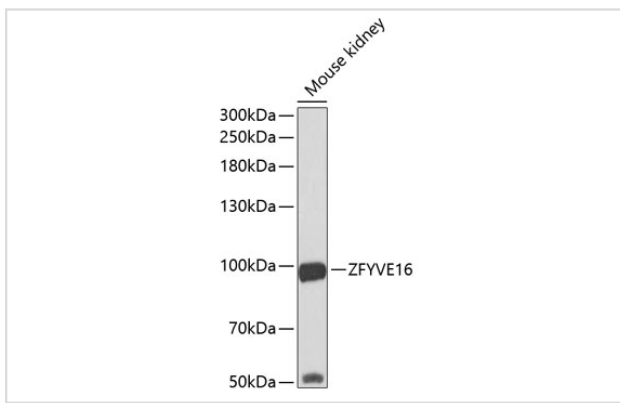
WB □ 1:500 - 1:2000 IHC □ 1:50 - 1:200 IF □ 1:50 - 1:200

Images



Immunofluorescence analysis of U2OS cells using ZFYVE16 at dilution of 1:100. Blue: DAPI for nuclear staining.

Western blot analysis of extracts of mouse kidney, using ZFYVE16 at 1:1000 dilution.



Background

This gene encodes an endosomal protein that belongs to the FYVE zinc finger family of proteins. The encoded protein is thought to regulate membrane trafficking in the endosome. This protein functions as a scaffold protein in the transforming growth factor-beta signaling pathway and is involved in positive and negative feedback regulation of the bone morphogenetic protein signaling pathway. Alternate splicing results in multiple transcript variants.

Note: This product is for in vitro research use only and is not intended for use in humans or animals.