

# RRAGA Rabbit Polyclonal Antibody

Catalog No: #55325



Package Size: #55325-1 50ul #55325-2 100ul

Orders: [order@signalwayantibody.com](mailto:order@signalwayantibody.com)

Support: [tech@signalwayantibody.com](mailto:tech@signalwayantibody.com)

## Description

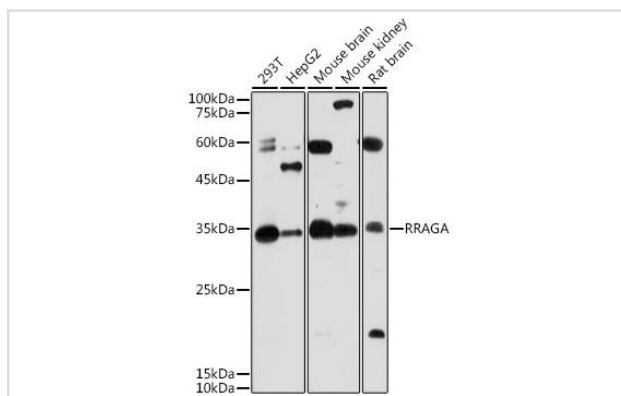
Product Name	RRAGA Rabbit Polyclonal Antibody
Host Species	Rabbit
Clonality	Polyclonal
Isotype	IgG
Purification	Affinity purification
Applications	WB,IF
Species Reactivity	Human,Mouse,Rat
Immunogen Description	A synthetic peptide corresponding of human RRAGA
Other Names	RRAGA;FIP-1;FIP1;RAGA
Accession No.	Swiss Prot:Q7L523GeneID:10670
Calculated MW	Calculated MW:37 kDa,Observed MW:33 kDa
Concentration	1.07 mg/ml
Formulation	PBS with 0.01% thimerosal,50% glycerol,pH7.3.
Storage	Store at -20°C. Avoid freeze / thaw cycles.

## Application Details

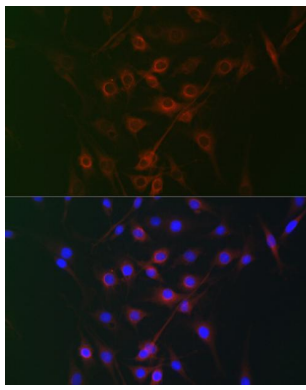
WB 1:500 - 1:1000

IF 1:50 - 1:200

## Images



Western blot analysis of extracts of various cell lines, using RRAGA antibody at 1:1000 dilution.



Immunofluorescence analysis of C6 cells using RRAGA Rabbit pAb at dilution of 1:100 (40x lens). Blue: DAPI for nuclear staining.

## Background

-

Note: This product is for in vitro research use only and is not intended for use in humans or animals.