

VANGL2 Rabbit Polyclonal Antibody

Catalog No: #55336

Package Size: #55336-1 50ul #55336-2 100ul

Orders: order@signalwayantibody.com
Support: tech@signalwayantibody.com

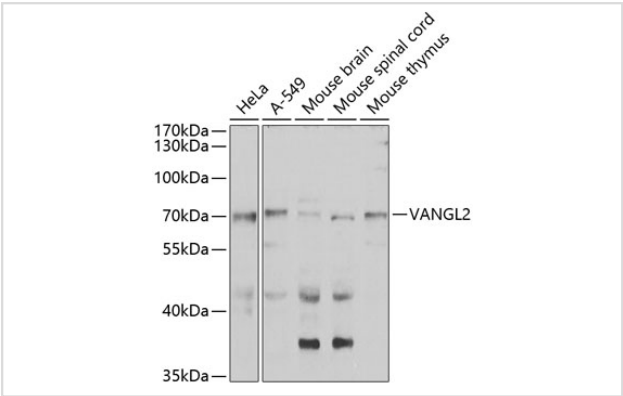
Description

Product Name	VANGL2 Rabbit Polyclonal Antibody
Host Species	Rabbit
Clonality	Polyclonal
Isotype	IgG
Purification	Affinity purification
Applications	WB,IHC
Species Reactivity	Human,Mouse
Immunogen Description	Recombinant fusion protein of human VANGL2 (NP_065068.1).
Other Names	VANGL2;LPP1;LTAP;STB1;STBM;STBM1
Accession No.	Swiss Prot:Q9ULK5GeneID:57216
Calculated MW	59kDa
SDS-PAGE MW	70kDa
Formulation	Buffer: PBS with 0.02% sodium azide,50% glycerol,pH7.3.
Storage	Store at -20°C. Avoid freeze / thaw cycles.

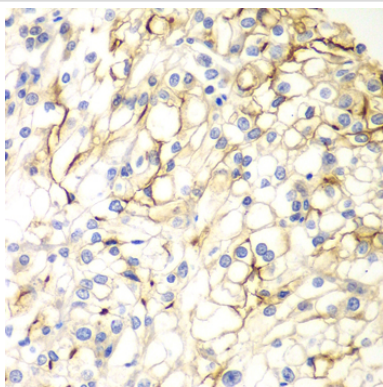
Application Details

WB 1:500 - 1:2000IHC 1:50 - 1:200

Images



Western blot analysis of extracts of various cell lines, using VANGL2 at 1:1000 dilution.



Immunohistochemistry of paraffin-embedded human kidney cancer using VANGl2 at dilution of 1:100 (40x lens).

Background

The protein encoded by this gene is a membrane protein involved in the regulation of planar cell polarity, especially in the stereociliary bundles of the cochlea. The encoded protein transmits directional signals to individual cells or groups of cells in epithelial sheets. This protein is also involved in the development of the neural plate.

Note: This product is for in vitro research use only and is not intended for use in humans or animals.