

# TSEN2 Rabbit Polyclonal Antibody

Catalog No: #55341

Package Size: #55341-1 50ul #55341-2 100ul

Orders: [order@signalwayantibody.com](mailto:order@signalwayantibody.com)Support: [tech@signalwayantibody.com](mailto:tech@signalwayantibody.com)

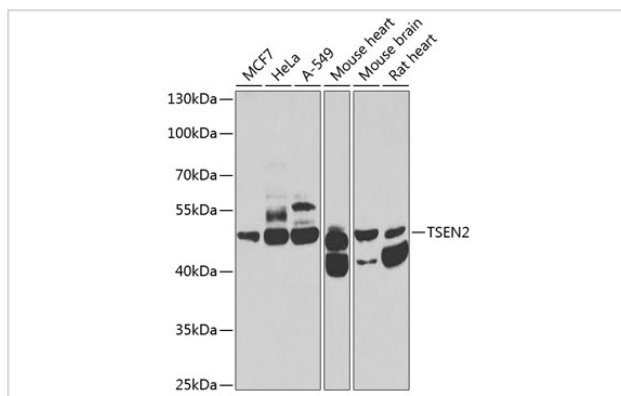
## Description

Product Name	TSEN2 Rabbit Polyclonal Antibody
Host Species	Rabbit
Clonality	Polyclonal
Isotype	IgG
Purification	Affinity purification
Applications	WB,IHC
Species Reactivity	Human,Mouse,Rat
Immunogen Description	Recombinant fusion protein of human TSEN2 (NP_079541.1).
Other Names	TSEN2;PCH2B;SEN2;SEN2L
Accession No.	Uniprot:Q8NCE0GeneID:80746
Calculated MW	45kDa/47kDa/49kDa/51kDa/53kDa
SDS-PAGE MW	53kDa
Formulation	PBS with 0.02% sodium azide,50% glycerol,pH7.3.
Storage	Store at -20°C. Avoid freeze / thaw cycles.

## Application Details

WB □ 1:500 - 1:2000 IHC □ 1:50 - 1:100

## Images



Western blot analysis of extracts of various cell lines, using TSEN2 antibody.

## Background

This gene encodes one of the subunits of the tRNA splicing endonuclease. This endonuclease catalyzes the first step in RNA splicing which is the removal of introns. Mutations in this gene have been associated with pontocerebellar hypoplasia type 2. A pseudogene has been identified on chromosome 4. Multiple transcript variants encoding different isoforms have been found for this gene.

---

Note: This product is for in vitro research use only and is not intended for use in humans or animals.