

## EEF1G Rabbit Polyclonal Antibody

Catalog No: #55361



Package Size: #55361-1 50ul #55361-2 100ul

Orders: [order@signalwayantibody.com](mailto:order@signalwayantibody.com)Support: [tech@signalwayantibody.com](mailto:tech@signalwayantibody.com)

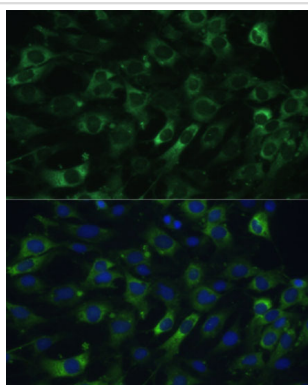
## Description

Product Name	EEF1G Rabbit Polyclonal Antibody
Host Species	Rabbit
Clonality	Polyclonal
Isotype	IgG
Purification	Affinity purification
Applications	WB,IHC,IF
Species Reactivity	Human,Mouse,Rat
Immunogen Description	Recombinant fusion protein of human EEF1G (NP_001395.1).
Other Names	EEF1G;EF1G;GIG35
Accession No.	Swiss Prot:P26641GeneID:1937
Calculated MW	50kDa/56kDa
SDS-PAGE MW	50kDa
Formulation	Buffer: PBS with 0.02% sodium azide,50% glycerol,pH7.3.
Storage	Store at -20°C. Avoid freeze / thaw cycles.

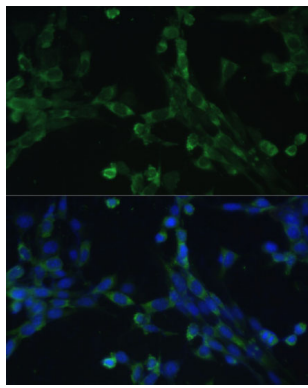
## Application Details

WB □ 1:500 - 1:2000 IHC □ 1:50 - 1:100 IF □ 1:50 - 1:100

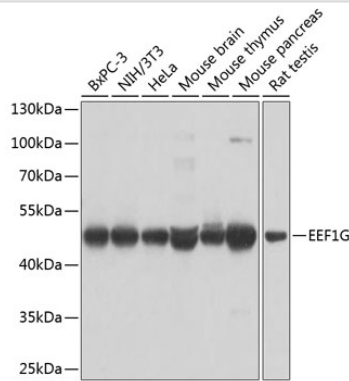
## Images



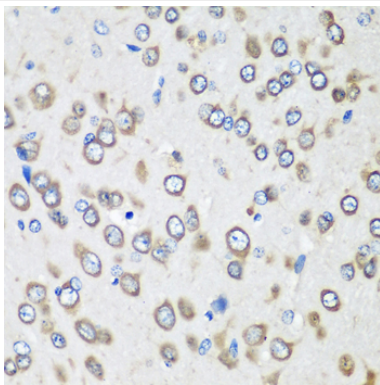
Immunofluorescence analysis of C6 cells using EEF1G Polyclonal at dilution of 1:100 (40x lens). Blue: DAPI for nuclear staining.



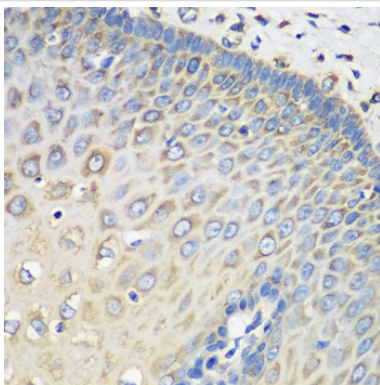
Immunofluorescence analysis of NIH-3T3 cells using EEF1G Polyclonal at dilution of 1:100 (40x lens). Blue: DAPI for nuclear staining.



Western blot analysis of extracts of various cell lines, using EEF1G at 1:1000 dilution.



Immunohistochemistry of paraffin-embedded rat brain using EEF1G at dilution of 1:100 (40x lens).



Immunohistochemistry of paraffin-embedded human esophagus using EEF1G at dilution of 1:100 (40x lens).

## Background

This gene encodes a subunit of the elongation factor-1 complex, which is responsible for the enzymatic delivery of aminoacyl tRNAs to the ribosome. This subunit contains an N-terminal glutathione transferase domain, which may be involved in regulating the assembly of multisubunit complexes containing this elongation factor and aminoacyl-tRNA synthetases.

---

Note: This product is for in vitro research use only and is not intended for use in humans or animals.