

NAPA Rabbit Polyclonal Antibody

Catalog No: #55387



Package Size: #55387-1 50ul #55387-2 100ul

Orders: order@signalwayantibody.com

Support: tech@signalwayantibody.com

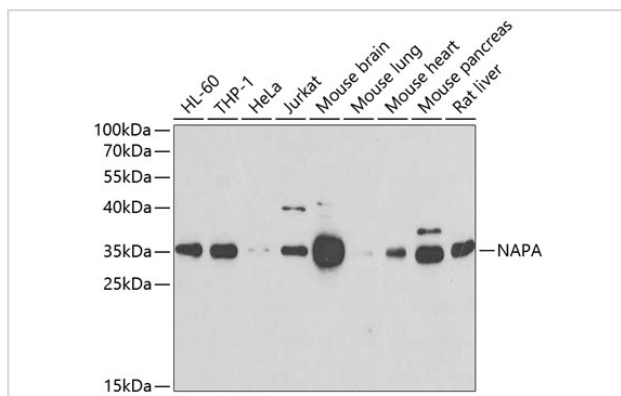
Description

Product Name	NAPA Rabbit Polyclonal Antibody
Host Species	Rabbit
Clonality	Polyclonal
Isotype	IgG
Purification	Affinity purification
Applications	WB,IHC
Species Reactivity	Human,Mouse,Rat
Immunogen Description	Recombinant protein of human NAPA
Other Names	NAPA;SNAPA
Accession No.	Swiss Prot:P54920GeneID:8775
Calculated MW	33kDa
SDS-PAGE MW	33kDa
Formulation	Buffer: PBS with 0.02% sodium azide,50% glycerol,pH7.3.
Storage	Store at -20°C. Avoid freeze / thaw cycles.

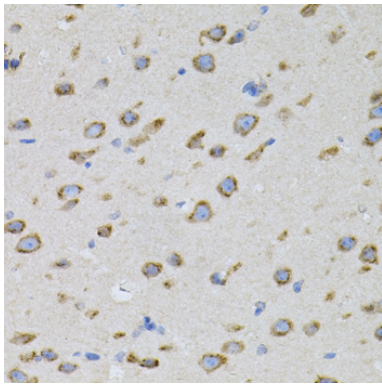
Application Details

WB □ 1:500 - 1:2000 IHC □ 1:100 - 1:200

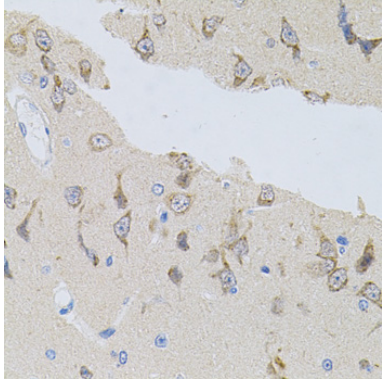
Images



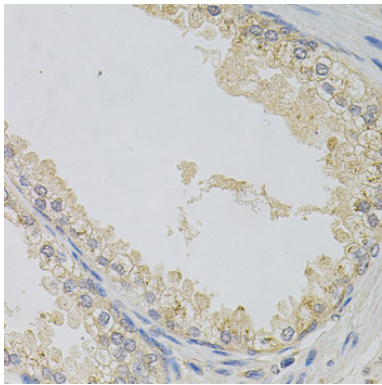
Western blot analysis of extracts of various cell lines, using NAPA at 1:500 dilution.



Immunohistochemistry of paraffin-embedded mouse brain using NAPA (40x lens).



Immunohistochemistry of paraffin-embedded rat brain using NAPA (40x lens).



Immunohistochemistry of paraffin-embedded human prostate using NAPA (40x lens).

Background

This gene encodes a member of the soluble NSF attachment protein (SNAP) family. SNAP proteins play a critical role in the docking and fusion of vesicles to target membranes as part of the 20S NSF-SNAP-SNARE complex. The encoded protein plays a role in the completion of membrane fusion by mediating the interaction of N-ethylmaleimide-sensitive factor (NSF) with the vesicle-associated and membrane-associated SNAP receptor (SNARE) complex, and stimulating the ATPase activity of NSF. Alternatively spliced transcript variants have been observed for this gene.

Note: This product is for in vitro research use only and is not intended for use in humans or animals.